



TEXAS A&M
INTERNATIONAL
UNIVERSITY



Resilience

2021 ANNUAL REPORT



Like a beacon, the entrance pylon to Texas A&M International University signals our resilience. Soaring skyward, basking in the day's sun, or casting its own glow at night...it remains a welcome harbinger of our essential mission.

Resilience also drives our students, like TAMIU Army ROTC members who hosted their first Veterans Day Ruck March honoring all branches of Veterans this November.

Community resilience is also exemplified by the Real Men Wear Pink initiative, designed to boost cancer awareness and support. TAMIU retiree Laura Martínez Bogue and Dr. Pablo Arenaz are big champions.

And as we look to the future and promise of a New Year, we see continued resilience and optimism in the award-winning photography of TAMIU Communication major Ernesto González. His photo "Boldly Go," was a second-place prizewinner in the Webb County Heritage Foundation's 2020 Historic Laredo Photo competition.

Happy New Year...Let's all Boldly Go Beyond!



2021 ANNUAL REPORT TEAM

DR. PABLO ARENAZ, PRESIDENT

PUBLISHER:
ROSANNE PALACIOS

EDITOR:
STEVE HARMON

ART DIRECTOR:
ANA CLAMONT

CONTRIBUTING DESIGN:
GEORGINA ZAMUDIO

CONTRIBUTING WRITERS:
MIKA AKIKUNI
STEVE HARMON
CHRISTINE ROJAS
SEAN SAPUTO

PHOTOGRAPHY:
ROLANDO SANTOS
ERNESTO GONZALEZ
TAMU STAFF PHOTOGRAPHERS



Visit us Online at tamiu.edu
STAY CONNECTED





The theme of this year's report is RESILIENCE and within these pages you will have the opportunity to see just how resilient our faculty, staff, students, and alumni have been over the last 20 months.

The past year and a half has been an amazing time for TAMU. Our faculty and staff's dedication to our students and to ensure that they had and continue to have the best possible educational experience has been truly inspiring.

The story of this University is steeped in resilience. It is a story of continued growth and increased access to higher education for the people of Webb County and South Texas. Our mission is driven by academic excellence, innovative scholarship, and student success. These three pillars undergird our foundation, permeate everything we do, and champion the IMPACT we have on this community, the region, and the State of Texas.

Dedication to our mission and the people of South Texas has led to a consistently high ranking among regional Universities in the West in *US News and World Report* and by many other ranking organizations.

“The story of this University is steeped in resilience. It is a story of continued growth and increased access to higher education for the people of Webb County and South Texas.”

– Dr. Pablo Arenaz

We are developers of human capital and an economic engine for Laredo and the region. We continue to be recognized nationally as an institution with a student debt that is among the lowest in the nation, for the upward mobility of our graduates, and the value of our degrees as measured by Return on Investment (ROI). Our undergraduate and graduate programs regularly receive regional and national recognition.

I would like to briefly recap some of TAMU's accomplishments over the past 20 months.

THIS IS HOW WE GO BEYOND> TOGETHER

17,874 COVID-19 Tests on Campus	705 Face Shields	680+ PPE Gowns	5,345 COVID-19 Vaccines Administered on Campus
10,000+ Pairs of Gloves on Campus	500 Loaner Laptops for Students	115+ Gallons of Hand Sanitizer	50 Hand Sanitizing Stations
115+ Gallons of Disinfecting Spray	2 Full Harvests of TAMIU Garden benefiting students, faculty, food banks	180 Wipe Dispenser Stations	
28 Hygiene Stations	City/District vaccine drives, health fairs, stroke support assistance by 215 Nursing Students	3,716 Service assistance hours generated by School of Nursing Students	

We had one of the most successful legislative sessions in my 13 years at TAMIU, thanks to our legislative delegation, Senator Judith Zaffirini and Representatives Richard Peña Raymond and Tracy King. Because of our enrollment growth, we received an additional \$3.8M over the biennium, which enabled us to create multiple new faculty positions for the first time in over 10 years. These new positions will lead to strengthening existing programs and allow us to add new programs.

In addition, we received \$6M over the biennium for our Path to Academic and Student Success (PASS) program which focuses on improving graduation and persistence rates, and targets junior and senior students. We also received an appropriation to construct a new Health Sciences Education and Research building. This facility will allow us to increase our health-related research and community outreach, something that's a legacy for us.

The McKenzie Scott \$40M gift has led to new opportunities for this University. In addition to doubling our Endowment, this gift inspired two donors to create endowed professorships in Engineering. These are the first of what I hope are many endowed professorships and chairs at TAMIU. We continue looking for other opportunities to match and thus expand her gift.

We added new Bachelor's degrees in Public Health, Petroleum Engineering and Computer Engineering and a Ph.D. program in Criminal Justice (CJ). The Ph.D. in CJ is our second free-standing doctoral program.

In closing, TAMIU continues to provide high quality higher education access to the citizens of Laredo and the region. We contribute to the economic well-being of Laredo and our graduates are successful once they leave.

Because we constantly GO BEYOND in everything we do, we have been very fortunate to receive numerous regional and national recognitions for our successes, our entrepreneurship, our scholarship, and our commitment to students, our community, and State.

I am very proud of what we have done, as I hope are you, our alumni, and friends. As you will see in these pages, we are resilient and will continue to be!

After all, it's how we Go Beyond.



Dr. Pablo Arenaz
TAMIU President

\$6M STATE LEGISLATURE FUNDING SUPPORT CREATES NEW 'PATH TO ACADEMIC & STUDENT SUCCESS'

As the 87th Session of the Texas Legislature drew to a close this Fall, TAMIU learned its "Path to Academic and Student Success" (PASS) program would be the recipient of \$6 million in funding.

TAMIU president Dr. Pablo Arenaz said the partnership with TAMIU's legislative team of Senator Judith Zaffirini and Representatives Richard Raymond Peña and Tracy King, as well as The Texas A&M University System Chancellor John Sharp and the TAMUS Office of Governmental Affairs, was fundamental to the successful funding.

"This team fought for TAMIU in what was an extraordinary Session. Because of their leadership, PASS will be a revolutionary support mechanism in bettering the lives of all TAMIU students and graduates-to-be," Dr. Arenaz said.

He spoke about PASS's germination and how it builds on institutional strengths to improve student persistence and graduation rates, among other benefits.

"After the flagship campus, TAMIU has the highest first and second-year persistence rates and six-year graduation rates in the A&M System -- rates above the State average. What PASS strengthens is proven student success strategies to facilitate community college transfers, re-enroll upper-division stop-outs, and improve all student persistence and graduation rates," he said.



TAMIU ENROLLMENT HOLDS STRONG DESPITE PANDEMIC

Despite the ongoing challenges of the COVID-19 Pandemic, Texas A&M International University's Fall enrollment has held steady, and graduate student enrollment is up.

In official enrollment figures shared with the Texas Higher Education Coordinating Board, TAMIU reported 8,457 students, which included an 8.7% increase in graduate student enrollment. Undergraduate enrollment was 6,892, with graduate and doctoral enrollment at 1,565. Semester credit hours, upon which the University's funding is calculated, were 93,216.

TAMIU president Dr. Pablo Arenaz credited the University's careful approach to a robust Fall on-campus experience and dedicated health and outreach services.

"Alongside our Texas A&M University System, we had committed our Fall to a return to a vibrant, on-campus experience for students, faculty, and staff. To help secure that experience, we followed the science and launched a mandatory surveillance testing program for all members of the University community, continued free rapid tests, and offered on-campus vaccinations through a partnership with the National Guard. These measures, coupled with our ongoing safety and wellness measures and our faculty and staff's commitment to delivering our mission as an essential State agency, were critical in helping us to secure this enrollment," Dr. Arenaz said.

He also noted that replacing students who have graduated is a shared challenge for all colleges and universities -- and even more so with the Pandemic's longevity.

"It's interesting that despite a record-breaking '20-'21 graduation class of over 1,850 students, we were able to meet this challenge successfully. The Pandemic has provided many with a chance to reflect, consider options, and plan for a new and brighter future," Arenaz observed.

TAMIU was designated by Student Loan Hero, a Lending Tree company, as the Least Expensive Public College/University in Texas.

Spring 2022 registration and classes begin Tuesday, Jan. 18, 2022. Late registration ends Monday, Jan. 24, 2022.

GRADUATE EDUCATION GROWTH DRIVEN BY ONLINE EXPANSION

TAMIU's Graduate School saw an enrollment growth this Fall of 8.7% and Dean Dr. Jennifer Coronado says there's a reason: new and enhanced programs that respond to market needs and student preferences.

"We always strive to provide a graduate experience that can not only deliver enhanced career or professional growth, but can do so by being accessible, affordable, and convenient. To that end, we've moved our Master of Science in School Counseling to an online platform to help graduate students accommodate often busy personal and family schedules," Dr. Coronado said.

Other online programs include an Alternative Certification Program that can be completed in as few as 12 months and involves 18 credit hours of study.

Online programs are also bringing additional

depth to the A. R. Sanchez, Jr. School of Business' acclaimed Master of Business Administration (MBA) by incorporating special concentrations with measurable relevance for the MBA-hungry job market.

"The MBA is the gold standard in Business, but also continues to have real-world application outside of conventional business settings. A graduate specialization can truly expand its value substantially.

"We've added two Concentrations: one in Criminal Justice and the other in Healthcare Administration. Both are popular employment drivers here in Laredo and beyond. Each sees distinct applications of the MBA and we believe that graduates who bring these additional Concentrations to their employment gain distinct and measurable career advantages," Coronado noted.

TENNIS WILL SOON SCORE AT TAMIU

Where sage brush and prickly pear once ruled, the sights and sounds of tennis will soon be seen and heard at TAMIU.

In groundbreaking ceremonies last June, the City of Laredo introduced its Tennis Complex at TAMIU.

The project grew from joint efforts by the City of Laredo Parks and Recreation Department, TAMIU Athletics Department, Laredo Tennis Association and the United States Tennis Association (USTA). The University has leased the land to the City of Laredo.

The City of Laredo Tennis Complex will be a state-of-the-art facility to include six National Collegiate Athletic Association (NCAA) collegiate-level courts and 12 USTA recreational-level courts. It occupies some 11 acres of land.

TAMIU president Dr. Pablo Arenaz lauded what he



Dr. Arenaz welcomes guests to ground breaking ceremonies.

called a "public-public" project.

"This is a public-public project as we worked long and worked hard to get this done, in a great partnership with the City of Laredo. It's a shining example of partnership with the City. We're also planning the addition of collegiate-level tennis to our 11 NCAA Division II sports, and hope this will encourage local tennis players to stay here at TAMIU," Dr. Arenaz said.

The Complex includes multi-purpose areas, home-visitor locker rooms, concessions, a racket-stringing area, a training room, and an observation terrace. It supports the University by enhancing recreational sports, the College of Education's Kinesiology program as well as student life and learning experiences.

The project will cost approximately \$7.5 million and estimated completion is early 2022.

MOU RENEWAL SIGNALS SHARED LC, TAMIU HIGHER EDUCATION PATH



Left to right, Juan Castillo, Rosanne Palacios, Dr. Minita Ramírez, Dr. Tom Mitchell, Dr. Pablo Arenaz, Dr. Marisela Rodríguez Tijerina, Lupita Zepeda, Jorge Delgado, Jackie Leven-Ramos, Dr. David V. Arreazola and Dr. Federico Solis, Jr.

The renewal of a long-cherished agreement between Laredo's champions of higher education, Laredo College (LC) and Texas A&M International University (TAMIU), was affirmed this Fall.

In an October ceremony, LC and TAMIU leaders once again affirmed their commitment to a shared path benefiting students' higher education goals with a powerful Memorandum of Understanding (MOU).

TAMIU President Dr. Pablo Arenaz said the accord signals a renewal of the institutions' shared commitment and vision for higher education here -- something he finds especially important in today's climate of challenge.

"This MOU helps codify something we both cherish: a shared commitment to higher education and our students. While the past 18+ months of the COVID-19 Pandemic have brought real challenges for higher

education in our community and region, we have both been sustained by the essential missions we deliver for students and their brighter futures. This MOU affirms that and encourages us to continue to do more," Dr. Arenaz said.

LC Interim President Dr. Marisela Rodríguez Tijerina concurred, noting the MOU helps make transfers seamless.

"This agreement is another example of how LC and TAMIU work together for the benefit of our students and community. It provides students a direct path in transferring seamlessly to TAMIU and assists them throughout their educational journey and completion. I look forward to collaborating more with TAMIU and continuing to build more opportunities for our students," Dr. Rodríguez Tijerina said.

COLLEGE OF ED PART OF SELECT U.S. GROUP TARGETING GREATER TEACHER DIVERSITY



Dr. James O'Meara

TAMIU's College of Education is one of just six U.S. educator preparation programs at minority-serving institutions (MSIs) selected to participate in the Branch Alliance for Educator Diversity's (BranchED) National Teacher Preparation Transformation Center. The Alliance is focused on developing an immersion process to produce highly effective and diverse teachers.

TAMIU president Dr. Pablo Arenaz said the University's selection underscores the quality of its educator preparation and its dedication to continued excellence and transformation.

"Our teaching, research and service as a Hispanic Serving Institution has a robust 50+ plus year legacy. Our College of Education prepares the majority of educators within a 150-mile radius of Laredo. We're very proud of our students, our graduates and our programs and their impact in classrooms everywhere. Our selection provides a dynamic opportunity to grow our teaching mission and our passion, and we're eager to do so," said Dr. Arenaz.

Dean of the College of Education Dr. James O'Meara said TAMIU has already established measures for the success of its transformation.

"We'll measure our successful transformation against four outcomes: the quality of integrated student support provided to our candidates; the volume of expanded and enriched learning time beyond the traditional curriculum; the frequency of family and community engagement, and the impact of collaborative leadership and practices," Dr. O'Meara said.

Major support comes from the Bill & Melinda Gates Foundation and the Walton Family Foundation. Support also comes from the Michael & Susan Dell Foundation and the Bezael Fund, among others.

MPA ACCREDITATION RENEWED, JOINS ELITE GROUP

TAMIU's Master of Public Administration (MPA) Program had its accreditation renewed this year by the prestigious Network of Schools of Public Policy, Affairs, and Administration (NASPAA), the global standard in public service education.

NASPAA's accreditation decision letter indicates that TAMIU's MPA Program was found to be in "substantial conformity" with NASPAA standards and has demonstrated a substantial commitment to quality public service education.

The MPA Program, offered fully online and initially accredited in 2013, is now accredited again for a period of six years. It joins over 200 accredited graduate programs in public service.

Dr. Peter Haruna, professor and MPA Program director, said MPA Program students and graduates can be assured that they are receiving quality professional public service education and training at TAMIU.

"We could not have done this without the sustained support and encouragement of our Department chair, College of Arts and Sciences dean, Graduate School dean, and provost and vice president for Academic Affairs," Dr. Haruna explained, "Other partners and stakeholders include MPA faculty, Advisory Board, instructional designers and MPA students and graduates who have supported the program as it navigated the rigorous, but rewarding accreditation process."

Haruna continued, "MPA Program graduates can be proud of their degree and students can be assured that they are getting high-quality, professional public service education and training."

NASPAA accreditation validates MPA Program faculty teaching, scholarship and research and adds value to the MPA degree, Haruna noted.



Dr. Peter Haruna



Ph.D cohort members left to right: Mika Susana Akikuni, Belinda Latsky-Campbell, Citlaly B. Palau, Rachel Simon, Vanessa Alamaraz, Briana Underbakke and Carlos Alvarez.

TAMIU ADDS NEW DOCTORAL DEGREE IN CRIMINAL JUSTICE

There's a new doctorate in the house at TAMIU.

In May, the Texas Higher Education Coordinating Board approved TAMIU's doctoral degree program in Criminal Justice.

Course offerings started this Fall for the Ph.D. in Criminal Justice, the University's second free-standing doctoral program in its 50+ year history. The first Ph.D. in Criminal Justice cohort includes Mika Akikuni, Vanessa Almaraz, Carlos Alvarez, Belinda Latsky-Campbell, Citlaly B. Palau, Rachel Simon, Briana Underbakke and Melanie Worsley.

TAMIU president Dr. Pablo Arenaz said the degree addition moves the University closer to designation as a doctoral-granting institution.

"TAMIU continues its ascendancy by creating richly relevant degree programs that address critical local, regional, national, and international needs. The addition of this doctoral degree also elevates the University's

academic status, accelerating our classification as a doctoral-granting institution," he said.

Dean Dr. Claudia San Miguel noted TAMIU joins a limited group of four universities in Texas offering a Ph.D. in Criminal Justice.

She maintains TAMIU's program is distinguished based on both its research location and cost-effective delivery.

"Laredo is a significant convergence point for examining local, state, and federal Criminal Justice issues," she said, "In conjunction with our historically popular and rapidly growing BS/MS in Criminal Justice programs, and its cadre of Ph.D.-trained scholars, TAMIU is poised to combine scholarly practice, student interest, faculty expertise, successful technological pedagogy, and Laredo's unique criminal justice activity to create a rich, doctoral opportunity."

NURSING DEGREE OPPORTUNITIES EXPAND AT TAMIU

TAMIU's College of Nursing and Health Sciences' Dr. F. M. Canseco School of Nursing continues to expand degree opportunities in Nursing with the launch of its RN to MSN Nursing Administration program this Fall.

After completing the undergraduate core curriculum and additional undergraduate requirements, students are automatically admitted to the Graduate School to complete a Master's in Nursing Administration (MSN).

Canseco School of Nursing Dean Dr. Marivic Torregosa said the new degree answers a critical need for nurses with leadership and management skills for nurse executive roles in a broad spectrum of healthcare settings.

"This program is unique in that nurses with an associate's degree obtain a Master's degree in Nursing Administration after completing streamlined coursework. In today's dynamic healthcare settings, most hospitals and healthcare organizations require a Master's degree

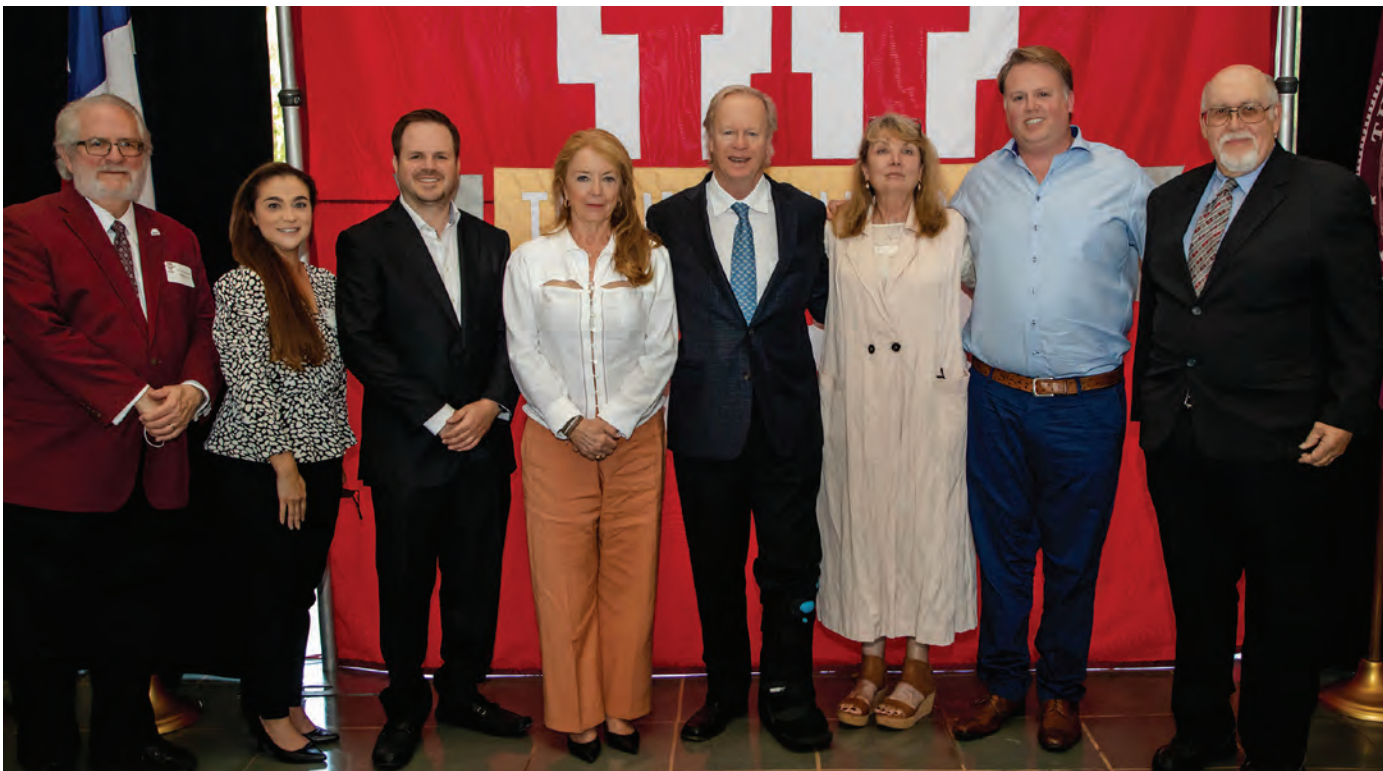
for nurse leaders and managers, and the MSN in Nursing Administration is the strong preference.

"In this Accreditation Commission for Education in Nursing-accredited online nursing program, students acquire a host of high-demand, marketable skills. Graduates will offer employers skills in leadership and management, financial and risk management, implementing evidence-based practices to improve patient care and outcomes, managing culturally competent patient care and leading with high ethical standards. Graduates are eligible to take the American Organization for Nursing Leadership Certification Exam and considered qualified to teach in undergraduate Nursing programs," Dr. Torregosa observed.

The School of Nursing's other recognized programs include a traditional BSN program, an online RN to BSN, an online Masters in Nursing Administration, and an MSN online Family Nurse Practitioner Program.

This Fall marked a promised return to a full and robust on-campus experience at TAMIU...and students responded affirmatively in every way. From the Ring Ceremony and Maroon Madness to pumpkin decorating and art shows and concerts, students were eager for campus life. While masks and social distancing remained recommended, Dustdevils made it clear there's no place like home.





Left to right, Dr. Tom Mitchell, Dr. Claudia San Miguel, David W. Killam, Jr., Tracy K. DiLeo, David W. Killam, Kati Killam, Cliffe Killam and Dr. Pablo Arenaz.

KILLAM FAMILY FOUNDATION PROVIDES \$1M ENDOWED PE PROFESSORSHIP

This Spring, a generous \$1 million gift from the Killam Family Foundation ushered in a new Endowed Professorship in TAMIU's Petroleum Engineering program.

TAMIU president Dr. Pablo Arenaz said the gift extends the Killam Family's legacy prominence in the University's continued development and growth.

"The Killam family has been absolutely crucial in the creation, development and continued growth of TAMIU. The vision for this particular program started with the Killam family's leadership and commitment to encouraging future generations of oil and gas industry professionals, and was pivotal to its April 2020 creation," Dr. Arenaz said.

The Killam family said the gift is an investment in change.

"With this contribution, our family hopes to inspire others to invest in TAMIU, because when we invest in higher education, we empower individuals to transform their lives and enable the change that people desire to advance their lives, families, and entire communities," Cliffe Killam said.

Joining Cliffe Killam on the Killam Family Foundation are Tracy DiLeo, Kati Killam, and David Killam – Sue and Radcliffe Killam's two daughters and son.

The gift honors the late Sue and Radcliffe Killam. Sue Killam loved Laredo and, once marrying Radcliffe, lived here for over 70 years.

Both were big believers in the power of education, leading to their involvement as Board Members of the University System of South Texas, including then-Laredo State University, from 1979 to 1986. Sue Killam also served on the Texas A&M University Chancellor's 21st Century Council of Advisors.

ART MAJORS THRIVE AT TAMIU THANKS TO WATSON ART SCHOLARSHIP

Art majors at TAMIU are growing, in part thanks to the provision of scholarship support from the Trustees of the Dolly Richter Watson Memorial Foundation of Laredo.

The Watson Memorial Scholarship expands on the Trustees' history of giving at TAMIU, which includes the creation of the Helen Richter Watson Gallery in the Sue and Radcliffe Killam Library, dedicated in 2011. The Gallery is home to the works and collection of Laredo's most heralded ceramic artist and educator.

2020–21 Dolly Richter Watson Memorial Scholarship recipients include: Alyna Robles, Jennifer Ramos, Jacqueline Rodríguez, Laretta Martínez, Kassandra Romero, Isai Olivas and Alejandra García.

James K. Jones, Jr. said the Foundation is proud to extend Dolly Richter Watson's legacy through the Gallery and Scholarship.

"Our previous gift to the University provided a home for the broad spectrum of art by Dolly's daughter, Helen Richter Watson. With this Foundation Scholarship, we can help ensure that TAMIU Art majors can complete their degrees and share their Art gift and career with others," Jones said.

Elizabeth Rubio Jones, a niece of Helen Richter Watson and granddaughter of Dolly Richter Watson, met with the students this Fall in the Watson Gallery and encouraged their artistic pursuits.

"It gives me great pleasure to meet all of you and I know that my Aunt and Grandmother would also be pleased that you are pursuing the arts. I hope you will all also develop and maintain the friendships you share as a group as you progress through your Art program here," she said.

Affectionately known to family and friends as "Whitie," Watson was the daughter of Helen Richter and Horace Watson. The Richter family was prolific in Laredo's business and artistic heritage. Horace Watson, her father, was from New York and a Calvary officer stationed at Fort Macintosh when he and Helen Richter met.

Young Helen was fond of harvesting mud from the banks of the Rio Grande, footsteps from her home, to create clay pots of transitory beauty. This link with nature would only be strengthened with her art education and teaching career.

She earned her BA at California's Scripps College and her MFA at Claremont Graduate School. In addition to serving on the faculty at Chaffey College and Mount San Antonio College, she was Chair of the Ceramics Department at the famed Otis Art Institute from 1958–1979.

Watson became one of the nation's most heralded ceramics artists and educators. She firmly believed that with determination, all students wishing to pursue a career in the arts could accomplish their dreams and make a contribution to the art world.

For more information on the Dolly Richter Watson Memorial Foundation Scholarship, contact the Office for Institutional Advancement at 956.326.2177, email Palacios at rosanne.palacios@tamiu.edu or click on <https://www.tamiu.edu/vpia>

Visit the Helen Richter Watson Gallery online at <https://www.tamiu.edu/watsongallery/>



First row, left to right: Alyna Robles, Jennifer Ramos, Jacqueline Rodríguez, Laretta Martínez, Scholarship family representative Elizabeth Jones Rubio. Back row, left to right: Kassandra Romero, Isai Olivas and Alejandra García.

RIO-SOUTH TEXAS EDUCATION AND COMMUNITY DEVELOPMENT FOUNDATION SUPER-CHARGES COMPUTER ENGINEERING WITH \$1.5M GIFT

A champion of South Texas education and community development has super-charged TAMIU's Computer Engineering program.

In July, the Rio-South Texas Education and Community Development Foundation provided two new Endowments at TAMIU totaling \$1.5 million -- funding a Professorship in Computer Engineering and a Computer Engineering Scholarship.

"Endowments of this magnitude are simply keystone events that help secure a program's potential for continued excellence and growth. Computer Engineering at TAMIU is consistently one of our most requested areas of student interest. These Endowments will help sustain that interest and degree pursuit, and accelerate the program's planned growth," observed TAMIU president Dr. Pablo Arenaz.

Foundation Board chair James E. Moore said the TAMIU Endowments are a strong reflection of a larger mission in the Rio-South Texas area.

"The Rio South Texas Education and Community Development Foundation Inc. is all about fueling inspiration, driving innovation and investing in our region's future. We can think of no better way to affirm that than by providing this University and its students the opportunity to thrive in Rio-South Texas and drive forward the brightest future possible for our counties and communities," Moore said.

The Foundation is an extension of the 45-year legacy of the South Texas Higher Education Authority. It helped hundreds of thousands of students achieve the dream of higher education through low-cost financing and millions of dollars in scholarships.

Today, its mission is "to ensure residents acquire skills and knowledge and have access to economic opportunities to enable them to pursue meaningful careers and live prosperous lives in Rio South Texas."

TAMIU's School of Engineering offers a B.S. in Computer Engineering and a B.S. in Petroleum Engineering.



Left to right are Matt Ruszcak, Adam González, Patricia Beard, Dr. Pablo Arenaz, Dr. Claudia San Miguel, and James E. Moore.

UNIVERSITY EMPLOYEE GIVING GROWS; HELPS SUPPORT TAMIU STUDENTS

TAMIU faculty and staff have once again generously donated over \$72,900 to support students in this year's #VivaTAMIU Faculty and Staff Giving Campaign – and set an impressive, eight percent increase in total employee giving over last year.

Giving by Annual Campaign donors increased over 12 percent from last year, totaling 406 donors. The #VivaTAMIU Faculty & Staff Challenge celebrates and encourages giving from within. To date, TAMIU employees have given over \$1,325,000 in student support.

Rosanne Palacios, TAMIU vice president of Institutional Advancement, explained the Campaign is an annual drive with friendly competition. Offices and department colleagues strive for 100 percent participation by encouraging team members' participation.

“We are grateful to all the TAMIU employees who participated in this year's #Viva TAMIU Campaign,” Palacios said, “Once again, faculty and staff have shown how much they care for our students and how they ‘Go Beyond’ by giving to the various areas of need they feel most passionate about.”

Full-time donors were feted with a #VivaTAMIU Fiesta in the Sue and Radcliffe Killam Library's Helen Richter Watson Gallery.



Left to right: Dr. Barbara Hong, University College dean, Rosanne Palacios, vice president for Institutional Advancement and Griz Zimmermann, Athletics director.

A QUICK LOOK AT TAMIU GIVING DAY '21

1,970 minutes means 33 hours to make a Big Difference at TAMIU.

That time frame marks the University's annual Giving Day, a part of November fundraising efforts for students, faculty, and programs since 2015.

It's a call to community in a season dedicated to giving thanks...and you sure did!

Raised: \$49,617
Gifts: 336

Total Donors: 321

- Students: 25%
- Alumni: 54%
- Parents: .4%
- Friends: 19%
- Faculty/ staff: 9%

Donor Demos:

States: 16
Countries: 5
Class Years Represented: 1972 – 2024

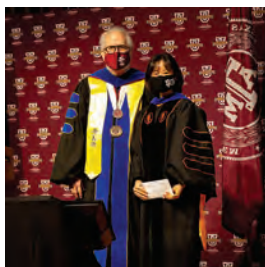
Giving Targeted:

- Area of Greatest Need
- Dusty's Food Pantry
- Leadership Programs
- Engineering Robotics
- Student Emergency Fund
- Fine Art Programs
- CNHS Area of Greatest Need

Find Out More:

go.tamiau.edu/givingday21

UNIVERSITY AWARDS RECOGNIZE FACULTY & COMMUNITY PARTNERS



Left to right: Dr. Tom Mitchell recognizes Dr. Jared R. Dmello, Dr. Hayley D. Kazen, Dr. Fei Luo, Dr. Deepak Ganta. At right, Dr. Pablo Arenaz congratulates Dr. Lola Norris.

TAMIU's Fall University Convocation recognized stellar faculty and community partners in a live and livestreamed ceremony. 2021 Awards to University faculty were presented alongside the Senator Judith Zaffirini Leadership Medal Award, and the University's *Innovador* Award.

Receiving the University's Instructional Technology Excellence Award was Dr. Jared R. Dmello, assistant professor, College of Arts and Sciences for his initiative in constantly enhancing student learning and engagement.

The Outstanding Teacher Award was presented to Dr. Hayley D. Kazen, assistant professional, University College. Her innovative teaching style, student-centered classroom and global outreach has seen her lead students around the world.

The Distinguished Teacher Award was received by Dr. Fei Luo, assistant professor, College of Arts and Sciences. Her students say she is dedicated, passionate, and caring...and works with them patiently until they succeed.

Distinguished Scholar of the Year Award was earned by Dr. Deepak Ganta, associate professor, School of Engineering. An active and highly productive scholar, he has published 24 peer-reviewed journal research articles.

President Dr. Pablo Arenaz presented the Senator Judith Zaffirini Leadership Medal Award to Dr. Lola Norris, associate professor, College of Arts and Sciences. It recognizes a faculty member's meritorious service and exemplary leadership while researching their area of expertise.

"Dr. Norris has long been involved in TAMIU's Language, Literature, and Translation programs. As Faculty Senate president of the Faculty Senate, she was the voice of the faculty, shared their concerns and made significant contributions to the discussion of difficult topics as we traversed the Pandemic," Dr. Arenaz noted.

The University's *Innovador* Award was created in 2019 to recognize an individual or organization making a lasting impact on education, particularly higher education in Laredo/South Texas.

The 2021 *Innovador* Award was presented to The Guadalupe and Lilia Martínez Foundation Trustees Bob and Shirley González.

"The Foundation's mission assists worthy charities in art, charitable, educational, health, historical, public safety, scientific, and religious purposes. Shirley and Bob certainly have fulfilled that mission at TAMIU in several ways. Most significantly, their love of travel and interest in providing such learning opportunities for TAMIU students has provided Study Abroad scholarships," Dr. Arenaz noted.

For a Video of the Ceremony, including the President's State of the University address, visit: go.tamtu.edu/faculty-awards21



Bob and Shirley González.

NIH \$929,500 GRANT FUNDS RESEARCH ON HISPANIC BODY COMPOSITION

TAMIU research on Hispanic Body Composition has set an historic funding and research precedent at the University. A new \$929,500 grant from the National Institutes of Health (NIH) funds the University's first four-year NIH research project.

"While the University has received NIH funding in the past, this is our first NIH research grant. It's a true distinction and sets a precedent as we move forward with other research proposals that could attract additional NIH research funding. This measurably elevates the research profile of the University and our faculty, and has the potential to have profound implications on research in this area," said President, Dr. Arenaz.

Project director and principal investigator for the grant is Dr. Brett Stephen Nickerson, assistant professor, College of Nursing and Health Sciences. He said he believes this research will help advance needed research in body composition for Hispanics.

"This research will allow us to determine if outlined assumptions employed in current body composition methods are violated when testing a Hispanic population. It may have implications on future research by identifying whether new equations are needed when assessing body composition of Hispanic adults," Dr. Nickerson explained.

Nickerson holds a Ph.D. in Exercise Physiology from the University of Alabama, and was selected TAMIU's 2020 University Scholar of the Year. He has developed two algorithms used for accessing body composition of Hispanic adults and has 55 peer-reviewed publications -- 29 as first author, primarily in body composition, his area of expertise.



Dr. Brett Stephen Nickerson

DR. THOMPSON EARNS DISTINGUISHED WRITING AWARD



Dr. Jerry Thompson

This year, TAMIU Regents and Piper Professor of History Dr. Jerry Thompson was named the recipient of the 2020 Army Historical Foundation Distinguished Writing Award.

Thompson was honored under the Book Awards – Biography category for his recent work,

"Courage Above All Things: General John Ellis Wool and the U.S. Military, 1812 – 1863," which was co-authored alongside Professor of History at the University of Arizona Dr. Harwood P. Hinton.

The biography meticulously details the extraordinary life of General John Ellis Wool. Half a century was devoted to the creation, research, and publication of this formative biographical work. The deeply researched work couples Hinton's vast knowledge of western history and was edited and completed by Thompson.

This seminal work is the first full biography of Wool, an eminent figure known for his role as an officer in the United States Army during the War of 1812, the Mexican-American War and the Civil War.

This was Thompson's 30th published book as author or editor.

Awarded through the Army Historical Foundation, the non-profit organization focuses on preserving the history and heritage of the American soldier.

Thompson, who has been part of the TAMIU faculty since 1987, is widely considered as one of the country's leading Civil War historians, especially regarding the Southwest Campaign. He is one of only a handful of writers to receive the Texas Institute of Letters Best Non-Fiction Award three times. He is also the only three-time recipient of the Clotilde P. García Tejano Book Prize.

TAMIU RECEIVES HUMANITIES TEXAS GRANT FOR 'DIVERSE CULTURES, DIVERSE HUMANITIES' SPEAKER SERIES

TAMIU recently received a grant totaling over \$10,000 from Humanities Texas, including matching funds, to launch a virtual speaker series bridging diversity and inclusion topics with the Humanities.

When TAMIU assistant professor of Humanities Dr. Adam Kozaczka held a fellowship at Syracuse University's Humanities Center in 2018, he discovered that an effective way to nurture the Humanities on and off campus was to emphasize how creative writers and humanists engage with issues students and the public care about.

A member of TAMIU's Inclusion, Diversity and Equity Committee (TIDE), Dr. Kozaczka partnered with TIDE co-chair and professor of Public Administration Dr. Peter Haruna and fellow TIDE member Dr. Jared Dmello, assistant professor of Criminal Justice, to write a grant application to Humanities Texas to invite renowned speakers to explore the cross section of diversity and inclusion with the Humanities.

The resulting TAMIU speaker series, "Diverse Cultures, Diverse Humanities," provides audiences with exposure to a wide range of Humanities scholars and creative writers as they engage with diversity topics, said Dr. Kozaczka.



Left to right are Dr. Peter Haruna, Dr. Adam Kozaczka and Dr. Jared Dmello.

Three speakers presented during the Fall 2021 semester. Four others will do so in the coming Spring 2022 semester.

"As members of Laredo's various communities ask important existential questions about what it means to live on the Border, the Series hopes to provide an ongoing conversation about a series of issues connected to diversity and inclusion that brings top humanists and creative writers to share their experience and expertise with the community," Kozaczka explained.

WOMEN'S HISTORY MONTH: ON BECOMING A DEAN

At TAMIU the majority -- or four of the six college or school deans -- are women. Among them are mothers, a first woman Hispanic dean, and women of international origins who've adapted to vastly different countries and higher education systems.

During Women's History Month this year, TAMIU's women deans: Dr. Jennifer Coronado, Graduate School; Dr. Claudia San Miguel, College of Arts and Sciences; Dr. Marivic Torregosa, College of Nursing and Health Sciences, and Dr. Barbara Hong, University College,

shared their life stories and the challenges they've had to overcome as women to reach their positions of leadership.

Below, they offer advice for women wishing to follow in their professional footsteps:

"You need to be a life-long learner. Stay current with what is happening in your field. Be dependable, organized, hardworking, trustworthy, a good listener, and always be positive."-- **Dr. Coronado**

"Be mindful of the past and the struggles women have faced, but do not let them or others deter you from achieving your goals. You have the capacity and strength to write your own story, to write her-story." -- **Dr. San Miguel.**

VISITING MUSIC FACULTY MEMBER BRINGS SITAR MUSIC TO TAMIU

Dr. Emily Vanchella, visiting music faculty member in TAMIU's College of Arts and Sciences, first heard the sitar on the popular Beatles song, *Norwegian Wood*. Since then, her appreciation and interest in the instrument has only flourished.

"Once I started actually started learning to play the sitar, the music theory and the instrument's significance



Dr. Emily Vanchella

in Hinduism and Indian spirituality also added this whole other level of appreciation to me," said Dr. Vanchella.

For Vanchella, the opportunity to impart knowledge and appreciation of American music from the 1960s has also been a source of great joy.

"I am so excited to be teaching here at TAMIU and just getting to share music and how much I love it, particularly American popular music and even more, in particular, the music of the 60s... that is the music that is closest to my own heart," said Vanchella.

For avid American music aficionados who may be unfamiliar with non-Western music, Vanchella has some words of advice.

"Take what your ears know about Western music and just set it aside for a second, and see if you can approach the music on its own terms," said Vanchella.

Vanchella earned a Ph.D. and a Master of Arts degree in Music Theory from the University of California – Santa Barbara, along with a Bachelor of Arts in Music from Agnes Scott College.

Enjoy our recent conversation with Dr. Vanchella at go.tamiau.edu/vanchella or give a listen to a recent sitar performance at go.tamiau.edu/sitar



Dr. Jennifer Coronado



Dr. Claudia San Miguel



Dr. Marivic Torregosa



Dr. Barbara Hong

"I would say train and work hard, find good mentors -- they may not be in your field -- and take some calculated risks." – **Dr. Torregosa.**

"Be willing to apologize but do not apologize for being who you are. Be ready to take on challenges, but

do not challenge yourself to prove to others." -- **Dr. Hong.**

Their expanded stories can be found here: go.tamiau.edu/whm-deans

LIBRARY COLLECTION HONORS BELOVED ALUM, FACULTY MEMBER AND FRIEND, DR. FRANCES “PANCHITA” GATES RHODES

Family members, University colleagues, friends and former students of the late TAMIU faculty member Dr. Frances “Panchita” Gates Rhodes welcomed her home to her beloved Sue and Radcliffe Killam Library this October.

They were gathered for an intimate unveiling and dedication of the new Dr. Frances “Panchita” Gates Rhodes Children’s and Young Adult Literature Collection on the Killam Library’s second floor.

The Collection spans some 15,644 items, memorializing Rhodes’ research and teaching. A plaque honoring her over 38 years of service heralds the Collection.



TAMIU president Dr. Pablo Arenaz welcomed guests and shared memories, noting Rhodes’

faculty mentorship and role as faculty ombudsman.

“Panchita was the heart and soul of our faculty. It was a role that just came to her naturally because she truly loved this University, and all that it represented and made possible for students, faculty and staff,” Dr. Arenaz said.

Provost and vice president for Academic Affairs, Dr. Tom Mitchell recalled Rhodes’ legacy.

“Dr. Rhodes was a passionate advocate for her discipline, for her students, for her colleagues, and for TAMIU. The students, graduates, and colleagues she inspired easily number in the thousands. And she was a hugger too. Everyone knew she cared for them. Through this Collection, her orbit will continue to widen and inspire others for generations to come,” Dr. Mitchell said.

In remarks from the family, Dr. Rhodes’ eldest daughter, Bianca Rhodes Spies, said the dedication had very special meaning.

“I’m honored to see her colleagues and former students and hear such kind words about my Mom. Having this Collection bear her name is truly the most meaningful gift we could have ever received, because she was a storyteller. She would have loved this, and I know she is beaming from above,” Spies said.

Rhodes retired in May 2020 as a much-admired and respected associate professor of English, former chair and, at the time of her retirement, senior lecturer at TAMIU. Her passing in January from COVID-19 was felt deeply at the University.

She had the distinction of being a former Laredo State University graduate (’78, ’79) who would return to become a faculty member in the very classrooms that molded her academic pursuits.

In addition to linguistics, Dr. Rhodes’ research included children’s literature, especially that of the Holocaust, young adult literature, language in contact, and the importance of storytelling. Completely bilingual in English and Spanish, she was a frequent guest in Laredo and Eagle Pass classrooms for children’s reading programs, and a lifelong advocate for the importance of folklore study.

To view our event livestream, visit:
go.tamtu.edu/rhodes-livestream



Family members join before plaque that heralds the 15,644-item Dr. Frances “Panchita” Gates Rhodes Children’s and Young Adult Literature Collection.

TAMIU GRADUATE ACCEPTED TO VANDERBILT PH.D PROGRAM



David González, '21

If any student can take a courageous leap between two seemingly distinct academic paths, it is TAMIU Master of Science in Biology graduate David González ('21) who has creatively fused the Performing Arts and Science.

Originally from Laredo,

González previously earned a Bachelor's degree in Acting at the American Musical and Dramatic Academy in 2013. A B.S. in Biology followed at TAMIU in 2019.

He was one of only six students nationwide accepted into Vanderbilt University's Ph.D. Program in Biological Science and started his doctoral studies in Nashville, TN this Fall.

At Vanderbilt, González was offered a College of Arts and Science Fellowship, which covers his full tuition, along with a 12-month stipend totaling \$32,000. He was also selected as a Provost Graduate Fellow, which provides an additional stipend of \$5,000 per year for three years.

While at TAMIU, González said he delved deeply into research with the mentorship of Dr. Ruby Ynalvez, TAMIU associate professor of Biology.

He said he chose TAMIU for his studies because in addition to being close to home, it offered myriads of opportunities.

"Many students that graduated from TAMIU that belonged to my graduating high school class have gone on to pursue professional careers and this spoke volumes about the University," he said, "I wanted to be a part of that legacy and be an inspiration for others in that it is never too late to begin your academic career."

ALUMNA BEGINS SPACE STUDIES GRADUATE PROGRAM

TAMIU alumna Victoria Rendón has her sights set on the stars.

A 2021 graduate with a bachelor's degree in Biology, Rendón was recently accepted into the International Space University's (ISU) Master of Space Studies Program in Strasbourg, France, and has since begun her courses in person.

After facing several unforeseen financial hardships, Rendón initially withdrew from TAMIU and began working in the medical field. It wasn't until the COVID-19 Pandemic that Rendón decided to continue and complete her studies at the University.

After graduation, Rendón determined she wanted to pursue a space-centered career path and applied to attend ISU.

"Despite the university having a 16% acceptance rate, I decided to take a chance and put together the best application that I could. I knew their applicant pool would be competitive because they have a preference for applicants holding higher academic degrees and applicants with professional experience in the industry, government agencies, or academic institutions, so, needless to say, I was thrilled to receive an acceptance letter less than 24 hours after my interview, making me one of a handful of Latinas to be admitted," explained Rendón in a GoFundMe post.

Established in 1987, ISU provides graduate-level training for members of the emerging global space community with core curriculum topics like space science, space engineering, space policy and law, and more.

Upon completion of the program, Rendón hopes to become an aerospace physician.



Victoria Rendón, '21

TAMIU FACULTY, ALUMNI TEAM AGAINST TRAFFICKING



Christian Benavides ('06) and Dr. Frances Bernat.

This Fall, TAMIU Regents Professor Dr. Frances Bernat saw a larger-than-life indication of the importance of her research on sex trafficking...a billboard that boldly shares a message focused on the dangers of online sexual exploitation, and bringing awareness to adults and teens.

The campaign, R.E.A.L. Friends Don't, grew from collaborations with like-minded individuals across the state. The Laredo billboard results from a partnership with The Outdoor Advertising Association of Texas, the Office of the Texas Governor, the McCain Institute, and the Trafficking Emergency Network...something very near and dear to Dr. Bernat.

"Last year, I started the Trafficking Emergency Network (TEN). Our mission is to protect youth and young adults from sex trafficking in South Texas and inspire change in their lives by having a network that provides advocacy, emergency support services, and a cohesive response to the needs of sex trafficked victims. Our motto is 'Stay courageous; There are more good

people in the world than bad,' "she explained.

"I submitted some grants to support the work of TEN," she continued, "Recently, the Texas Governor's Office funded our diversion court (TEND) to help identify and provide services to children in the Child Protection Court who are at risk of being sex trafficked or sexually exploited. As a TAMIU faculty member, my role is to help network with people and agencies and to provide research services to TEN members."

Part of that work also afforded a rare opportunity to reconnect with a former student and alum, Christian Benavides ('06), who was a pivotal part of a strong local and state collaboration driving the initiative.

"Christian contacted me because he is the South Texas administrator for the Governor's Office handling child sex trafficking. He is a great partner and is helpful in identifying network partners and furthering TEN. Joining this collaboration are Julia Rubio (Webb County prosecutor), Judge Selina Mireles (Child Protection Court), Michele Nigliazzo (attorney), and others in the

court diversion. We hope to help the County's children by identifying children at risk of sexual exploitation, working with schools and agencies to provide services and identification tools," she said.

Bernat says the billboard, located at 5823 McPherson, is an extension of her involvement in providing a support network to address the needs of sex trafficked victims. She has been at work addressing the challenge of trafficking in her research, service, and teaching for some time, and considers it a guiding life mission.

"I have been working on issues pertaining to the sexual exploitation of youth and youth resilience for decades. My research expertise is invaluable to help the community network partners in using tools to identify potential victims and create a network partnership that is dynamic and responsive. I will be providing both a program and a process evaluation of the diversion court. I will assist in grant writing and providing research expertise to network partners and the community," she noted.

Of the Digital Billboard Campaign, she says she believes sharing this important message at such a large scale helps to underscore its significance for all.

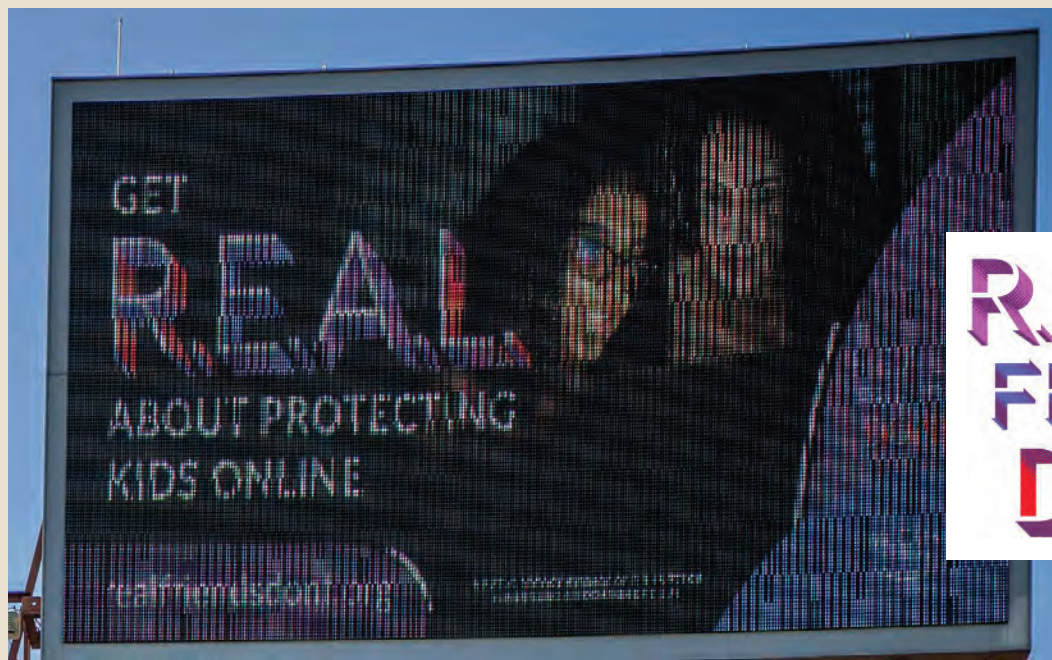
"The digital billboard is essential to help broadcast to the community the dangers of online sexual exploitation and to bring awareness to adults and teens. Over 95% of teens are online. Sexual exploitation can happen by friends and strangers. It is important that children do not send nude pictures and if they are sent pornography that they report it.

"The campaign is a great way to help youth know that friends 'don't' ask for sexual pictures and 'don't' send sexual pictures and videos. Once sexual pictures of youth are 'out' on the web, the pictures can be sold and resold for many years. The youth who sent a nude picture can be further exploited by those who manipulate them in a variety of sexual exploitation ways -- leading to sex trafficking," she shared.

The billboard is a tool, but Dr. Bernat said there are plenty more tools to be utilized.

"There are additional research and implementation steps that I am continually working on with TEN members and partners," she assured.

In the meantime, the message rings loud and true: R.E.A.L. Friends Don't.



To learn more about this initiative, please visit <https://www.realfriendsdont.org/>

**REAL
FRIENDS
DON'T**

The billboard, located at 5823 McPherson, is an important awareness tool.

ORGANIZATIONS GROW, PROGRESS WITH FEMALE LEADERSHIP

At TAMIU, female leadership is taking shape through the combined efforts of women leading campus-wide organizations.

For the second year in a row, women are leading the University's Faculty Senate, Staff Senate and Student Government Association.

Currently, the groups are being led by Faculty Senate president Dr. María de Lourdes Viloria, associate professor of Education; Staff Senate president Cihltalli Pérez, institutional effectiveness officer at University College, and Student Government Association's (SGA) student body president Lourdes Boardman.

During the 2020–21 semester, the same campus groups were also led by women, including, Dr. Lola Norris, associate professor of Spanish and Translation; Ana María Vargas, associate director of Web, and Mariana Rodríguez.

Through their leadership efforts, they represent and advocate for the interests of faculty, staff, and students at the University. Individuals are appointed to their respective positions by vote and help formulate recommendations to the University administration.



Left to right: Mariana Rodríguez, Dr. María de Lourdes Viloria, Cihltalli Pérez, Lourdes Boardman, Ana María Vargas and Dr. Lola Norris.

STUDENT EARNS NATIONAL ESPORTS GAMING TITLE



Ivan Larumbe

Ivan Larumbe, a Kinesiology major at TAMIU, is making his mark in the gaming industry among collegiate gamers this year.

Larumbe took the title of the NIRSA eSports Tournament Champion. During a three-day tournament, Larumbe competed in the Rocket League 1v1 (or one versus one player) Rec Division.

The tournament included 233 students representing 48 institutions from across the U.S. and Canada.

Players represented several universities, including Louisiana State University, Lubbock Christian University, Minnesota State University, Texas A&M University–Commerce, the University of Florida, and more.

Since the program's inception, the University's Rec Sports has hosted various campus tournaments that have been streamed onto Twitch, a world-renowned popular livestreaming platform for gamers. The University's Twitch stream includes 372 followers (and counting).

Currently, TAMIU eSports competes through the National Association of Collegiate Esports, the leading organization for collegiate eSports that boasts 120 member institutions in the United States.

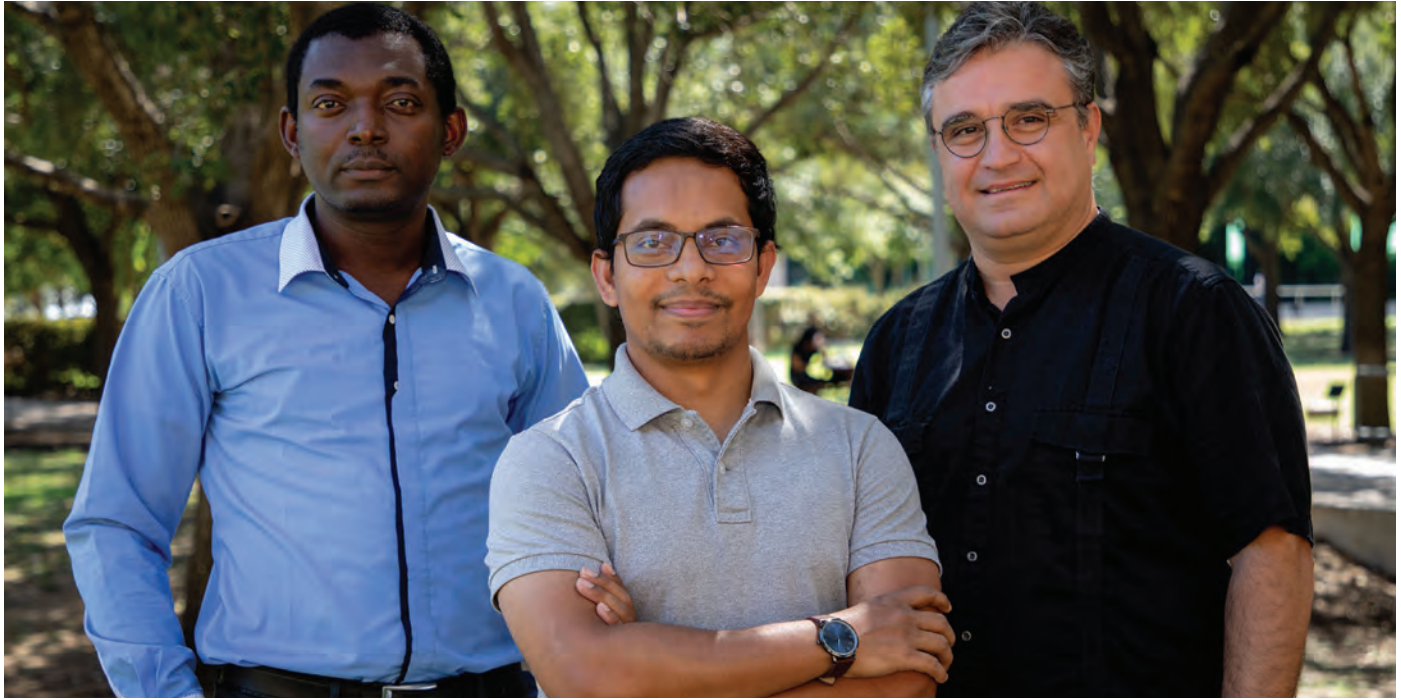
Larumbe, who games up to five hours a day, was excited to have won the tournament and noted the importance of gaming in his life.

"Gaming is important to me because I use it to stay connected to my friends, to de-stress and I love to compete," Larumbe observed.

In addition to his gaming, Larumbe plays intramural basketball and soccer. He hopes to become a high school sports coach.

University students with an interest in gaming can visit go.tamtu.edu/esports for more information.

BUSINESS DOCTORAL STUDENTS PUBLISH PAPER ON COVID-19 IN INTERNATIONAL JOURNAL



An academic paper authored by three TAMU A. R. Sanchez, Jr. School of Business doctoral students exploring critical determinants of death rates in pandemics such as COVID-19 was published in the prestigious *International Journal of Disaster Risk Reduction*.

Ph.D. in International Business Administration students Arman Canatay, Tochukwu Emegwa and Farid Hossain Talukder authored the paper titled, “Critical Country-Level Determinants of Death Rate During COVID-19 Pandemic.” It appeared in the *Journal’s* October 2021 edition.

The paper has also been listed as a reference in the World Health Organization’s COVID-19 Global Literature on Coronavirus Disease online.

In short, the paper examined the critical determinants of death rate in a Pandemic such as COVID-19 and looked at whether cultural differences such as power distance and individualism among countries play an important role in death rates.

TAMU A. R. Sanchez, Jr. School of Business doctoral students pictured from left to right: Tochukwu Emegwa, Farid Hossain Talukder, and Arman Canatay.

Using WarpPLS, a software designed by TAMU Regents Professor Dr. Nereu Kock, and data collected from 168 countries, the study looked at the effects of four sets of country-level factors. In addition, the authors examined Lockdown as a moderating factor.

The authors’ findings reveal that cultural factors, gender and age affect the death rate more than other socio-economic factors they used in the study. They also affirm that Lockdown levels have a more significant moderating effect on cultural factors rather than other socio-economic factors.

Based on their findings, the authors conclude that Lockdown needs to be practiced more strictly where the countries possess excessive power distance or excessive individualism.

WE 'WELCOME' 1,000+ STUDENTS AT DUSTY CAMP



This year, 1,113 first-year students participated in a beloved campus orientation tradition before beginning their TAMIU journey.

Affectionately known as Dusty Camp, the two-day student orientation experience welcomed students to campus, where they learned more about University services, academic expectations and experienced student life first-hand. During Dusty Camp, first-year students are led by student Orientation Leaders.

While the COVID-19 Pandemic halted last year's orientation activities, incoming Dusty Campers chose between an in-person or a virtual orientation experience.

Overwhelmingly, students opted for the in-person experience, resulting in all six Dusty Camps being held in-person, with an optional overnight stay at the Residential Learning Community.

"Students left feeling as if they understood institutional expectations related to academics, engagement and safety. Students enjoyed connecting

with their fellow Dustdevils, faculty and staff, a great change of pace from being behind their computer screens as they had been throughout the last year," said Dr. Nicholas Hudson, TAMIU Student Orientation, Leadership and Engagement director.

Additionally, 333 students participated in Dustdevil Transition, a one-day orientation session exclusively for transfer students.

The University also held its first "How To TAMIU," a one-day orientation event focused on University sophomore students transitioning back to an on-campus experience after spending the past year in a virtual classroom environment.

Activities held throughout the orientation sessions included meeting College or School Deans, touring the campus, and learning more about student resources.

Learn more about Dusty Camp at go.tamtu.edu/orientation

TRiO STUDENT SUPPORT SERVICES CELEBRATES 20TH

TRiO Student Support Services (TRiO SSS) commemorated its 20th Anniversary this year with a special ceremony honoring program students.

At a 20th Annual Awards Dinner held in August, over 40 TAMIU students were recognized for their academic achievements and participation in the TRiO program during the 2019-2020 and 2020-2021 academic years.

Several students were recognized with an Academic Excellence Award for earning a GPA between 3.51 - 4.0. Recipients included Lesly Carmona, Joy Davis, Fatima Ibarra, Rodolfo Morales and Ever Palacios.

Students earning a GPA between a 3.0 and 3.5 received the Academic Achievement Award. This year's recipients were César Rodrigo Guerra, Mitzy Juárez, María Guadalupe Moreno, Haziél Mota, Marco Ortiz, Ana Toscano and Erestina Vela.

During the Awards Ceremony, several University and TRiO program alumni shared testimonials, including Alejandro Costabella ('06, '21). A TRiO program alumna



who graduated as part of the University's first TRiO program cohort, Costabella earned a Bachelor of Arts in Business Administration and a Master of Science degree in Educational Administration.

Other alumni included Brenda E. Briones ('05, '15), who earned a Bachelor of Arts in Psychology and a Master of Science degree in School Counseling; Hilda L. Enriquez Escalante ('06, '21), who earned a Bachelor of Science in Nursing and a Master of Science in Nursing Administration, and Juan J. Vegas ('06), who received a Bachelor of Science in Nursing.

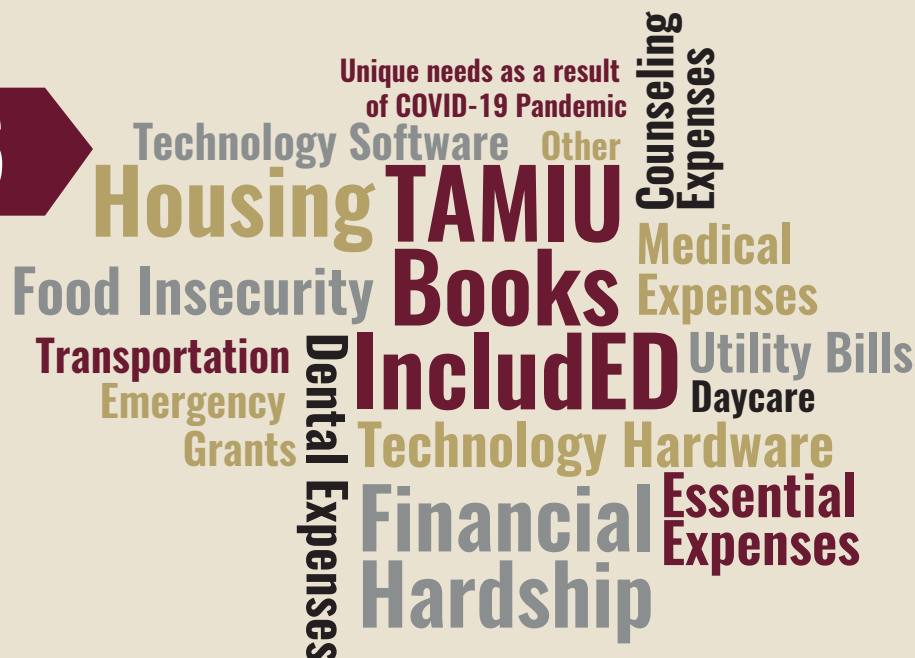
TAMIU's TRiO programs are funded by the U.S. Department of Education and provide academic assistance to eligible undergraduate students.

TAMIU CARES AWARDS

\$6,831,416

"Thousands of TAMIU students and their families have been impacted by the COVID-19 Pandemic. Through TAMIU CARES/ ARP funding and additional aid from non-governmental sources, we have been able to offer a true beacon of relief. We are truly thankful to our congressional delegation and The Texas A&M University System Emergency Regent's Grant for their leadership on this."

-- Dr. Pablo Arenaz, President



DUSTDEVIL ATHLETICS TEAMS WEATHER CHANGE AND EXCEL

After a unique 2020–21 season due to the COVID-19 Pandemic, Texas A&M International University athletics, as well as the entire country had to adjust to a new schedule model and way of playing.

The Dustdevils excelled last season in athletics, playing extremely well on the field and on the court.

Cross country kicked off the sports season for TAMIU and did especially well. The women's team placed fourth in the Lone Star Conference Championships and the men's finished eighth. Five runners earned All-LSC honors, finishing top 15 in the meet (three women and two men). The women's team and the two All-LSC men also qualified for the 2020 Division II National Invitational Meet.

Team sports didn't resume until nearly November, as men's and women's basketball took the floor.

Women's basketball had a banner year, winning the LSC South Division Championship, going 11–5 overall and 9–4 in LSC play, earning the team's first trip to the LSC Tournament. The Dustdevils had the best win percentage in a single season, as well as three players earning All-LSC honors, one of which was named the LSC Defensive Player of the Year.

Men's basketball ushered in a new era with head coach Mac McConnell, and while the record may not have been flashy, the growth could be seen for the upcoming years.

Normal fall sports volleyball, men's soccer and women's soccer were moved to the spring and joined softball, baseball and men's and women's golf.

Men's and women's golf all competed in several tournaments and come LSC Championship time, the women's team placed seventh and men's 12th.



TAMIU Women's Basketball presented with
2020–21 LSC South Division Championship Trophy
By TAMIU President Dr. Pablo Arenaz
at Maroon Madness 2021



defeating a top 10 team at that very tournament.

Men's soccer did not have LSC Tournament fortunes, but played .500 soccer on the year with a 3-3-2 mark, with five players being named All-LSC. Women's soccer did however make the LSC Tournament behind first year head coach Jon Hussak, after a 3-3-1 regular season and a record of 3-4-1 after hosting a LSC Tournament match.

First year head coach Phillip Middleton led baseball in the spring, and while the record was 9-26 for the first-year coach, the Dustdevils were rarely out of games and are another team with a bright future ahead.

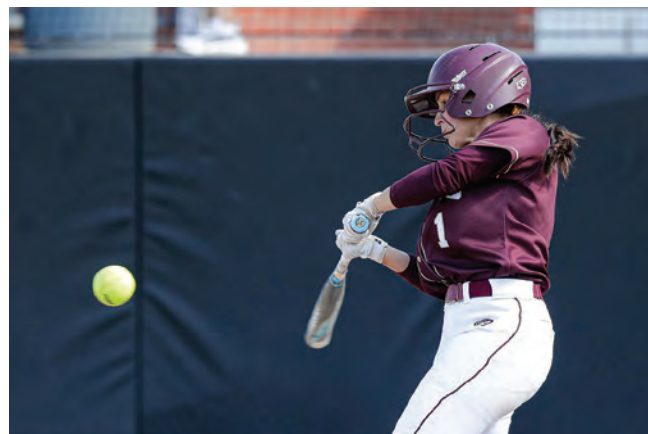
Softball also had an exceptional year, finishing sixth in the LSC with a 26-19 record and 18-12 conference mark, earning a trip to the LSC Tournament. In the tournament, TAMIU upset #3 Texas A&M-Commerce and made it to the semifinals of the tournament with that victory, coming very close to earning a spot in the NCAA Tournament.

Follow TAMIU Dustdevil Athletics on godustdevils.com and on social channels on Facebook and Twitter @TAMIUATHLETICS.



Women's junior Yuliana Yapur placed eighth in the LSC Tournament and men's senior Parker Holekamp was the runner-up.

Volleyball saw a 6-11 mark and 4-8 conference record under first year coach Brittany Harry and clinched a spot in the LSC Tournament. After the season ended, TAMIU entered the AVCA Division II Women's National Championship with a strong 3-2 showing,



DUSTDEVILS FOCUS SERVICE EFFORTS ON LAS PALMAS TRAIL BEAUTIFICATION

TAMIU students, faculty, and staff joined to create a lasting impact in their local community as part of Make a Difference Day 2021.

This year, volunteers focused on the beautification of the Las Palmas Trail.

A total of over 270 University volunteers participated in the volunteer effort, generating 3,010 service hours.

Located in the heart of downtown Laredo, the Las Palmas Trail is a nature trail and boasts a significant array of local flora and fauna native to the region, including many palm trees. Volunteers focused on gathering fallen palm fronds and cleaning the Trail.

Organized through the TAMIU's Student Government Association's L.O.V.E. Committee and the Office of Student Conduct and Community Engagement, these initiatives also encourage the partnership of community leaders.

This year's partners included the Laredo Rotary, City Councilmember Alyssa Cigarroa, the Rio Grande International Study Center, Keep Laredo Beautiful and the City of Laredo.



Now in its 12th year, the University's Make a Difference Day has established itself as a long-standing tradition aimed at harnessing the collective efforts of the campus community to spearhead a community-wide improvement initiative.

Since 2010, University volunteers have worked on various community-wide projects benefiting groups such as Habitat for Humanity, Volunteers Serving the Need, the Laredo Animal Care Facility, the Azteca Neighborhood, Ruthe B. Cowl Rehabilitation Center and many more.

To see an event photo gallery and video, visit:
go.tamtu.edu/madd21

STUDENTS CRAFT CHILDREN'S BOOKS, LBV LITERACY PARTNERSHIP



Students enrolled in the Multilingual Children's Literature course this past Spring 2020 semester crafted a series of children's books that will be used by student tutors involved in the TAMIU-Lamar Bruni Vergara Literacy Partnership (TAMIU-LBV). The books were handed off to the TAMIU-LBV Literacy Partnership during an in-person event that included a children's book display, at the Sue and Radcliffe Killam Library Great Room.

TAMIU students enrolled in the Multilingual Children's Literature course during the Spring 2020 semester crafted a series of children's books used by student tutors involved in the TAMIU-Lamar Bruni Vergara (LBV) Literacy Partnership.

A total of 42 books were created by 42 University students and were donated to the TAMIU - LBV Literacy Partnership during a Book Hand-Off event this May.

The collaborative service-learning project was led by Dr. Kaitlyn M. Culliton, assistant professor of English.

Throughout the collaborative process, students wrote, illustrated, and published original picture books that engaged with their community and reflected on their own experiences.

"Significant research has demonstrated that early literacy is the best way to offer students lifelong academic success and to bridge achievement gaps between students. However, early literacy acquisition is subject to

several social and cultural challenges. The TAMIU-LBV Literacy Partnership provides tutoring to address early achievement gaps by reading with students in weekly tutoring sessions," Dr. Culliton explained.

Currently, book sets reside in literacy centers in TAMIU-LBV Literacy Partnership schools.

The TAMIU-LBV Literacy Partnership is a community engagement initiative funded by the Lamar Bruni Vergara Charitable Trust. Through the LBV Trust's generous support, the Partnership provides one-to-one tutoring to children throughout Laredo and professional development targeting early literacy.

The collaborative effort includes support from Laredo College, Laredo Independent School District, and United ISD.

Additional information on the TAMIU - LBV Literacy Partnership is available at go.tamiau.edu/lbv-partnership

GARDEN YIELDS GROWTH, PLENTIFUL HARVEST FOR ALL

The small, but fruitful permaculture installation otherwise known as the TAMIU Garden has taken shape this year thanks to the efforts of its volunteers, student workers and University staff members.

Located behind the Kinesiology Wellness and Recreation Center, various crops are grown year-round utilizing organic methods that contribute to a clean and flavorful harvest.

Christopher Segovia, special program aid with the College of Arts and Sciences, spearheads TAMIU Garden initiatives, with the help of over 15 regular volunteers.

“We have also germinated and grown well over 500 plants from seed during the 2021 season, and hope to double this the following year,” said Segovia.

Between 150–180 lbs. of vegetables were gathered and donated to local community entities like Holding Institute and the Laredo Community Fridge, in addition to campus dining services. This year alone, the TAMIU Garden received an estimated 200 visitors.

Initially, the TAMIU Garden grew from a 2016 pilot program that saw students build a garden behind the Lamar Bruni Vergara Science Center. That effort grew substantially with acquiring its current 8000-square foot space.

The TAMIU Garden has been growing ever since and today affords innovative opportunities for students and community members alike. These efforts included a family-friendly Pumpkin Painting activity, plant-inspired artwork installations on campus, a dedicated web site and a monthly column in *The Laredo Morning Times’ Dvino Magazine*.



TAMIU GOES GLOBAL WITH CELEBRATION OF WORLD TEACHERS DAY



Dr. Christian Faltis, Dr. Filiz Shine, and Dr. James O'Meara.

As part of this year's World Teachers Day celebration, TAMIU's College of Education participated in an outreach opportunity that spanned from Laredo to Australia.

College of Education students joined as potential co-founders of a new democratic system of education aimed at addressing educational inequity, in partnership with the Australian Indigenous Mentoring Experience (AIME), a global non-profit headquartered in Australia. A video of their meeting is available at go.tamiau.edu/aime.

Students, including members of the Texas Association of Future Educators (TAFE), joined AIME's latest initiative to transform the face of education through IMAGI-NATION {University}, which represents a network of change-organizers working to solve the biggest challenges facing our planet.

“Our goal is for our students and TAFE members to not only finish school and transition into university, but to seize control of their own internal narratives as educators and educational leaders and help future students fully realize the potential each has. Together, they will share a challenge of organizing change throughout 2022 by mobilizing 100 other students to become mentors and, in turn, inspire 100 local high school students to nurture a new, transformative mindset that's focused on addressing educational inequity...,” said Dr. James O'Meara, College of Education dean.

The celebration of World Teachers Day took place throughout The Texas A&M University System's 13 campuses.

TAMIU STUDENTS GET AN ACE FOR ACADEMIC SUCCESS

This Fall, TAMIU students welcomed a new one-stop center for academic success, featuring free tutoring and academic advising services both in-person and online with flexible and extended hours of operation.

TAMIU's Academic Center for Excellence (ACE) provides houses previously existing academic support services in one center to ensure students have ready access to the resources needed to complete their degrees in a timely manner.

Dr. Barbara Hong, University College dean, said ACE provides free, subject tutoring such as reading content and writing courses to all students and one-on-one academic advising for freshman, transfer, and returning students. Students can also receive supplemental instruction in historically difficult courses integrating

“what to learn” with “how to learn” concepts through weekly sessions.

“The mission of University College is to empower students to become competent, resilient, and self-determined life-long learners, and ACE was established to guide TAMIU students through their academic journey,” she said, “The ACE team is made up of highly-qualified and caring faculty and staff who are here to provide direction and personalized support so that students can successfully complete their education at TAMIU in a timely manner.”

ACE wants students to readily identify and take advantage of its free services as soon as they are admitted to TAMIU, Hong concluded.

To find out more, visit: go.tamiau.edu/ace

NEA-FUNDED ‘THE LIVING MURAL’ TO SHARE LAREDO HISTORY, CULTURE

Q: What’s 30-foot long, three stories tall, offers an inspired sense of our shared culture and past and is poised to become a living, iconographic destination for downtown Laredo?

A: “The Living Mural,” a downtown, interactive, three-dimensional mosaic mural funded by a \$10,000 National Endowment for the Arts (NEA) Grant installed on-site at the historic La Posada Hotel.

This innovative project is led by Grant authors, principals and TAMIU art faculty members Emily Bayless, assistant professor, ceramics, and Josias Figueirido, assistant professor, drawing and painting. They’re assisted by student research associates Elkin Cortez Cab, Daniela Jiménez, Lauretta Martínez, and Vanessa Rodríguez Renteria.

While the project is still in development and won’t be mounted till late next year, the pair’s enthusiasm for the multi-part, collaborative project is palpable.



Left to right: Josias Figueirido and Emily Bayless.

Professor Bayless says the idea sprang from the very location that will be the future home to The Living Mural.

“We had a student show at the La Posada in 2020 and remarked at the time that it seemed to be a great collaborative location...the historical center of town, an area ripe for rejuvenation...and we thought a 3D mosaic had the potential to be attractive for an NEA Grant,” she recalled.

The pair worked with the University’s Office of Research and Sponsored Projects to develop their proposal. Additional funding for student research assistance is provided by the University’s ACT on IDEAS program.

Read more about The Living Mural online at go.tamiau.edu/living-mural

President's Society (\$25,000.00 +)

Branch Alliance for
Educator Diversity
Doctors Hospital of Laredo
EOG Resources, Inc.
D. D. Hachar Charitable Trust Fund
Killam Family Foundation
Laredo Area Community Foundation
Laredo Medical Center
Louis P. LaVaude
Jaime J. Loera
Diana S. and Albert T. Lowry
Methodist Healthcare Ministries of
South Texas Inc.
Rio-South Texas Education Community
Development Foundation
Elizabeth and Harry Sames, III
A. R. "Tony" and Sanchez
Family Foundation
Francisco M. Staggs, Jr.
Raul C. Staggs
Evelyn and Carroll E. Summers, Jr.
TAMIU Alumni Association
TexProtects Champions for
Safe Children
Lamar Bruni Vergara Trust
Dolly Richter Watson
Memorial Foundation
Robert A. Welch Foundation

Dean's Circle (\$10,000.00 +)

BBVA Compass Bank
Consulado General de
Mexico en Laredo
Dr. Ike's
John G. and Marie Stella Kenedy
Memorial Foundation
Cristina and Cliffe Killam, II
Laredo Rehabilitation Hospital LLC
Dr. Francisco A. Leal and
Nora M. Leal
Pilar Munoa
Ana Newman '82
Texas A&M Foundation
Trellis Company
Rob and Bessie Welder
Wildlife Foundation
Audrey and Carlos M. Zaffirini, Jr.

Chair's Circle (\$5,000.00 +)

Alhambra Zahara Caravan #64
Anonymous
Area Health Education Center
Arturo N. Benavides, Jr.
Capital Farm Credit, FLCA
The Honorable Anna Galo and The
Honorable John Galo
Housing and Residence Life
at TAMIU
International Bank of Commerce
Luther King Capital Management
Laredo Specialty Hospital

Richer Family
Scratch Sandwich Company
Women's City Club

Scholar's Circle (\$1,000.00 +)

AT&T Wireless
Evelyn P. Blakely '75
Alicia and Vidal Cantu, Jr.
Doctors Hospital Auxiliary
Electric Transmission Texas LLC
Funso Fagbongbe
Sandra '92 and Peter Fallgatter
Firehouse Subs
Gerardo Flores '00, '02
Grease Monkey
Law Offices of Michael M. Guerra
Instituto Cultural Mexicano
de Laredo
Chih-Yung Kuo, Au.D
Linda and Steve LaMantia
LULAC Council #7
Teresa Maloney
Javier Mendoza '02, '16
Garry Mauro
Pan American Round Table
of Laredo
Epitacio R. Resendez, V '88
Angela and Glenn Ruiz, Sr.
Texas Health and Human Services
Miguel A. Trevino
Monica Washington
Abe S. Wilson

University Partner's Circle (\$500.00 +)

Cristy Alexander
Dr. James Bell and Doris Bell '81
Gene L. Burgess
Tina and Russell Cerda
June Deadrick
Juvencio De Anda Endowment
Carolyn and Stephen C. Flagor '99
Luis T. Guerra
Christina '99 and Albert Gutierrez, III
Linda and Douglas Howland
Laredo Lawn, Inc.
Laredo Theater Guild International
Yvonne LaVaude
Regent Elaine Mendoza and
Larry Gay
Sravanthi Miryala and
Prabhakar Muriki '04
Hector Noyola, Sr.
Popeyes Louisiana Kitchen
Lu Rao '90 and Zhao Liu
San Antonio CPA CE Foundation
JoEmma and Edward Sherfey, Jr.
Spread the Vote
Carmel Smith
Shawn Young

Century Circle (\$100.00 +)

Flora Aguero '72
Jorge A. Aguilar '11
Patsy and Jesus Alaniz, Jr. '95
Carole L. Alexander '95
Juan G. Alfaro '03
Alliance for Youth Organizing
Judith and Stephen Alton, JD
Sonia Alvarado '87
Diana N. Aquino '16, '21
Antonio S. Arce
Amelie and Peter Arguindegui, III
Sandra Arguello
Celita Borchers
Patricia and Ernest Bruni, III
Buffalo Wild Wings
Natalie C. Burkhalter
Joseph Byrd '05, '17
Adalia '03 and Aaron Canales
Gustavo Cantu
Angel D. Cedillo
Mark A. Cochrane '11
Craig Couch
Jazmin L. Covington
Dr. Billy F. Cowart
Steve Coyle
Thelma and Daniel Cuellar
Nancy de Anda
Marty de Llano
Rosa Maria de Llano '80
Jasmine L. Delgadillo '18
Dissinger Reed
Jaime A. Espinoza
Susy Farias
Viviana Frank and Frank Rotnofsky
Dr. Michael Galo and Patricia Galo
Dr. Norma Garcia '77, '85 and
Ramiro Garcia
Olga '90, '98 and Richard Gentry
Patty and Moses Goldberg
Eliza and Javier Gonzalez
Janice and Arnulfo Gonzalez, Jr.
Martha Olivos-Gonzalez '05 and
Adan Gonzalez, III
Toni and Sergio Gonzalez, Jr.
Ang Gracia
Diana '17 and Ubaldo Granados, Jr.
Bill Green
Pati Guajardo and Daniel Ryan
Leonor and Frank Guerra
Raul Guerra '90
Rosalba Guerra '84 and
Heliodoro Villarreal, Jr.
Dr. Jesus Gutierrez, Jr. and
Leonor Gutierrez '77, '89
Mario Guzman, Jr. '04
Hector Hall
Roberto Hernandez '05 and
Stephen Tsimpides
Jules R. Hetland
Elena Holloway
Ruoxu Hu '90
Jiffy Lube
Silvia and Jeff Jones

Dr. Jacinto Juarez, Jr. and
Diana Juarez '76
Vanessa and Ruben Juarez '96
Ibrahim M. Kero '16, '18
Gail Kilmer
Kowalsky, Rose & Company, PC
Melissa Kumnick
Laredo Center for the Arts
Tony Leyendecker, Jr.
Jenny '81, '02 and Luis Lidsky
and Family
Rose A. Littlepage
Joshua Llamas '16
MaryLou and Armando X. Lopez
Consuelo F. Lopez
Main Event Entertainment
James P. McGrath
Linda Merrell
Janet '91 and Thomas Miller
Ruben Montoya '13, '20
Patricia '96 and Fernando Morales, Jr. '06
Leticia Moran '78
Martha and Jose Moreno '81
Elise A. Munoz '19
Imelda Navarro '81
Kathy and Orlando Navarro '94
Janene Niblock
Susan E. Nichols '88
Larry A. Norton
Robert Melchor P. Novido '20
Adriana '90, '98 and Erik Ommen '93
Dr. Oluwole Owoye '81 and
Vanessa Owoye
Horacio G. Palacios
Jessica Palacios '03
Rick Pauza
Bea and Mario Pena '78
Aleksi '19 and Efrain Perez
Linda and Alfredo Perez '89, '09
Sergio A. Perez '14
Adamo J. Pesce '97
Kornkanok Piamjariyakul '91
John Portlock
Priya Punalekar
Lisa Quick
Raising Cane's Restaurant, LLC
Adriana and J. E. Ramirez, Jr.
David Reyes '16
Cecilio Rodriguez
Estella Rodriguez '00
Olga C. and Hector Rosas
Maria R. Rosillo
Frances Salinas
Triana and Richard Sames
Diana and Arnulfo Santos, Jr. '76
Dr. Arthur Santos and Olivia Varela
Rogelio Senties
Raquel Sepulveda Juarez '00
Jane and Dongli Shen '88
Eduardo A. Solano '17, '19
Anne and Brian Spies
Jennifer Spies
Catherine Stewart
Target
Jennifer Torres '08

Eduardo Valverde '93
 Jeffrey H. Vanhorn
 Edgar G. Varela '17
 Dr. Miroslava Vargas '75, '80 and
 Juan Vargas '72
 Mauricio A. Vasquez
 Priya and Shashi Vaswani
 Reynol Vela, Jr. '17
 Roberto Vela
 Eduardo Vidales
 Dr. Susan Walker
 Ronald J. Waters
 Steve and Alice Whitworth
 Angela Williams
 Peni Wood
 Roberta Kahn-Zuniga and
 Federico Zuniga

Maroon & Silver Circle (\$50.00 +)

Airrosti Rehab Center, LLC
 Kim and Guillermo Alexander
 Aramark Corporation
 Andres Aranguren '16
 Kurt Baum
 Bharath Kumar Bikkavolu '17
 Graciela '08 and James Bonnette
 Elizabeth Brown
 Patti and Ernest Bruni, III
 Andrew L. Carranco

Paul Carter
 Libby and Alfonso Casso, Jr.
 Natalie Catalina
 Gustavo Cantu
 Suresh Chinta '08
 Gabriela '05 and Wilford Collins, Jr.
 Charlotte DeLon
 Michael DeLon
 Betty De Leon
 Linda J. Deadrick '20
 Bryana G. Duck '20
 Andrew Flagler
 Andrea Flores
 Brenda L. Flores '16
 Mary and Robert Freeman, II
 Reverend Paul Frey
 Diana Fuentes
 Christian A. Garcia '14
 Genesis C. Garcia-Escobedo
 Jose E. Gomez '16
 Cinthia I. Gonzalez '13, '15
 Kelly Green
 Luis A. Guajardo, Jr. '85
 Mohan Krishna Gangarapu '16
 Phyllis Guderian
 Lulu '04 and Hector Guerra '96
 H-E-B Grocery Co. # 5
 Candy and Conrado M. Hein, Jr. '28
 Claudia '17, '21 and John Hourigan
 Edgar O. Hernandez '16

Paula and Gabriel Heyn
 Daniel E. Jimenez '15
 Nancy and William Johnstone
 Dorina Kabashi '01
 Cheryl Kelly
 Charlotte Kosse
 Sandeep Lambu '06
 Zhe Li '07
 Al Linauskas
 Jonathan R. Loa '19
 Deanna L. Longoria '72
 Cindy Lopez
 Sandra '90, '93, and Juan Lozano
 Oscar Martin Averó
 Jacqueline '93 and Jesus Martinez
 Susan McCloskey
 Amira E. Mejia '88
 Julio A. Mendez, Sr. '97
 Marah Mendez '10
 Megan J. Mikulik
 Richard E. Mims '12
 Dr. Cecilia Moreno '83 and
 Samuel Moreno
 Ricardo J. Munoz '21
 Ana Ochoa '86
 Laura A. Olmos '97
 Rebecca Ortiz
 Esteban Otero, Jr. '16, '19
 Jesus E. Padilla '18, '19
 Cristi '99 and Joe Palacios, Jr.

Juliana and Orlando Patricio '19
 Elizabeth '91 and Sigifredo Perez, III
 Julian B. Quesada '18
 Angelica Renteria
 Andrea Resendez '20
 Daniela D. C. Rodriguez '17
 Darlene M. Rogers '98
 Jose A. Salas '14
 The Honorable Diana Saldana and
 Roberto Arredondo '11
 Maria Salinas
 Arturo Sandoval
 Arturo San Martin, Jr. '21
 Vijay Bhargav Sandra '15
 Georgia Shurts
 Alisa C. Solis '20
 Criselda Tapia
 Aminta Tijerina
 Nicole Townsend
 Jose de Jesus Valadez, Jr. '11
 Alicia Valdez
 Nnenna and Okezie Wachuku '83
 Bob Wade
 Marie and J. D. Wendeborn
 Elia and Michael York
 Chenhui Zhou
 Phylis A. Zimmermann '16

PENNY WARS MAKE SENSE

Penny Wars is a fundraiser established by TAMIU's Student Philanthropy Council in 2015. It encourages students to donate spare change in support of a specific area or program on campus through a friendly competition between TAMIU Colleges and Schools.

Since its launch, Penny Wars has raised over \$15,000 for scholarships and programs.

This year, TAMIU students are proud to have raised \$5,168.30 to benefit the International Student Fund. The College of Education was the winner of this year's Penny Wars Campaign. Every penny really counts!



Since its start, the SPC's Penny Wars has also created a \$40,000 endowment for student scholarships.

President's Circle (\$25,000 +)

Juan J. Castillo

Deans's Circle (\$10,000 +)

Dr. Pablo Arenaz
Rosanne Palacios

Scholar's Circle (\$1,000 +)

Dr. Deborah L. Blackwell
Dr. Jui-Chin Chang
Dr. Nathaniel P. Graham
Gina D. Gonzalez '99
Dr. Tonya Huber
Alejandro A. Martinez, Jr. '89
Dr. Thomas R. Mitchell
Dr. James G. O'Meara
Dr. Minita Ramirez '83
Dr. Marivic B. Torregosa
Dr. Desi Vasquez

University Partner's Circle (\$500 +)

Anonymous
Dr. Randel D. Brown
Dr. Guillermo C. Dominguez
Dr. Melissa P. Garcia
Maria Elena Hernandez '82
Dr. Barbara H. Hong
Dr. John C. Kilburn, Jr.
Dr. Alfredo Ramirez, Jr. '93, '98
Dr. Jerry D. Thompson
Ana M. Vargas '12, '14
Griz Zimmermann

Century Circle (\$100 +)

Dr. Patricia I. Abrego '85
Dr. Homero Aguirre-Milling '77
Mika S. Akikuni '02
Dr. David E. Allen
Vanessa L. Almaraz '05, '14
Anonymous
Claudio E. Arias
Julie E. Barrera '08, '12
Claudia C. Beltran '01, '17
Endenira Bernal '15, '19
Diana Blackwell '12, '17
Maggie Blasco '98, '01
Dr. Adriana Blasco Rubio '00
Laura Bogue
Dr. Manuel Broncano
Dr. Li Z. Brooks
Dr. Jack C. Byham

Ma. Eugenia Calderon-Porter '99, '01
Ivan Cano '16
Patty Cantu '95
Jody L. Carlisle
Marta Castro '00
Alberto Chavez, Jr. '01, '08
Dr. Moon-Kyung Cho
Juan Cisneros, III '01
Dr. George R. Clarke
Cathy M. Colunga
Athena M. Cortez '05
Malynda M. Dalton
Dr. Lina M. De La Garza '03
Dr. Jared R. Dmello
Adrian Dominguez '03, '07
Dr. Stephen M. Duffy
Christa L. Elizondo '19
Laura Elizondo '95
Angie Escamilla
Abigail Fernandez '15
Maria C. Flores-Westerman
Anne R. Frey
Pat Garcia
Juan G. Garcia, Jr. '05, '07
Dr. Nilda Garcia, '06, '09
Rocio Garcia '08, '11
Veronica E. Garcia '19
Dr. Friedrich C. Gechter
Dr. Puneet S. Gill
Ana M. Gonzalez '08
Dr. Ariadne A. Gonzalez '05
Dr. Belva J. Gonzalez
Dr. Guillermo E. Gonzalez
Margarett Gonzalez '12
Madison R. Guerra '21
Carol A. Gunnoe
Ann E. Gutierrez '03, '16
Rita M. Haber '97, '06
Dr. Alison M. Hadley-Hilburn
Brittany Harry
Dr. Peter F. Haruna
Lisa H. Heard '06, '10
Mayra G. Hernandez '07
Conchita Hickey, PhD
Dr. Kelly J. Higgins
Dr. Nicholas L. Hudson
Jonathan A. Hussak
Dr. Balaji Janamanchi
Margarita A. Johnson '16
Dr. Kameron R. Jorgensen
Dr. Hayley D. Kazen '05
Dr. Robin L. Knowles
Daniel A. Lathey
Scott E. Libby
Dr. Kevin D. Lindberg
Patsy Lopez
Elena Martinez '93
Dr. Gilda Y. Martinez '04, '08, '12
Martha Laura Medina
Jessie M. Mena
Angelica M. Michelangeli '01, '10
Henry A. Miller '00, '12

ALUMNI SPOTLIGHTS

Matías Ydrogo III ('01,'06)

Matías Ydrogo III is Director of Special Education at Laredo's United Independent School District. He's a 20-year veteran educator with an extensive background in special education and has been part of UISD for 11 years. He earned a Bachelor of Arts in Bilingual Education and a Master of Science in Generic Special Education from TAMU. "I am excited to be part of the UISD family and to serve, support, and guide our school communities," Ydrogo said.



Dr. Aaron L. Modic
Angela M. Moran
Dr. Daniel J. Mott
Dr. Qingwen Ni
Dr. James A. Norris
Dr. Angel A. Pacheco Paredes
Amy Palacios '08, '11
Dr. Rolando Pena-Sanchez
Jessica Perez '09
Jerry Quintero '97
Melisa R. Rangel '95, '08
Benjamin S. Rawlins
Mariana Rodriguez '21
Christine Rojas '12
Elizabeth Rubio
Dr. Gustavo Salazar, II '99
Martha E. Salinas '99
Dr. Claudia E. San Miguel '97, '99
Fructuoso San Miguel, III '92, '02
Roberto G. Sanchez '84
Miguel A. Saucedo '05, '09
Dr. Deborah M. Scaggs
Dr. Steve Sears
Dr. Federico Schaffler '93
Jonathan P. Serna '07, '11
Dr. Filiz E. Shine
Jessica P. Tamez
Dr. Jerry Thompson
Jennifer Torres '08
Mary T. Trevino '72
Dr. Patricia E. Uribe '91
Linda V. Villarreal
Dr. Lourdes Vilorio '93
Dr. Jascha Wagner
Ginger Watkins Grayson '11
Rodney M. Webb
Dr. Susan Wei
Dr. Marcus Ynalvez
Dr. Ruby A. Ynalvez

Maroon & Silver Circle (\$25 +)

Sanaa Z. M. Al Nasser '21
Laina W. Allen
Jennipher A. Ambrose '17
Anonymous
Rodrigo Avila '14
Mariana Barberena '08
Dr. Emily N. Bayless
Michelle A. Begwin
Heather K. Benavides
Rosario Benavides '12, '14
Dr. Marvin E. Bennett, III
Enrique E. Botello '12
Jackelyne K. Brisenio '15, '19
Dr. Jeffrey M. Brown
Thomas R. Brown
Anna Buentello '11
Cesar A. Caballero '12, '17
Cristina M. Calderon '09, '12
Dr. Irma L. Cantu
Dr. Jose J. Cardona-Lopez
Marcus T. Carey
Kathy A. Casares
Anna L. Castillo
Jessica D. Chandaris '15
Gabriela Chapa '20
Dr. Shu-Hsiu Chen
Yong Chen
Dr. Anna B. Cieslicka
Ana P. Clamont '00, '07
Norma A. Cortez
Amy L. Cortina '19
Dana H. Crabtree
Leti Cruz '12
Dr. John E. Dean
Rosa A. Dickinson '97, '01
Melissa J. Dominguez '05
Youssef O. Elmasry
Ofelia Escamilla-Pena
Juan F. Espinoza '10, '13
Dr. Josias Figueirido Rivas

Aide Flores '02
 Valentina Flores '13, '15
 Nora U. Gaona
 Vivian I. Garcia
 Denisse Garza '12, '14
 Roberto H. Garza, III '10, '13
 Ruth A. Garza '07, '15
 Dr. Sergio D. Garza
 Antonio I. Gonzalez '10
 Bobby Gonzalez, Jr.
 Cinthia I. Gonzalez '13, '15
 Guillermo F. Gonzalez, Jr., '03, '05
 Scheiby C. Gonzalez Fisher '07, '16
 Selina Y. Gonzalez '12, '19
 Catrina E. Green
 Judy Gutierrez '12, '15
 Sophia A. Gutierrez
 Consuelo L. Guzman '19
 San Juana H. Guzman
 Sharon Harris '94
 Dr. Muhammad Z. Hasan
 San Juanita Hernandez '03, '12
 Rebecca Herrera
 Dr. Andrew M. Hilburn
 Rogelio H. Hinojosa
 Destine D. Holmgreen '00
 Yelitza M. Howard '11
 Alexandra C. Howland '18
 Jake Hudspeth
 Dr. Ken Hung
 Alma V. Jasso Chavez '02
 Christy L. Jimenez '07, '11
 Dr. Josiah S. Johnson
 Federico Juarez, III '92, '08
 Dr. Michael R. Kidd
 Dr. Ju Oak Kim
 Daniel R. King '11
 Karla Leal '19
 Nora A. Lerma
 Dr. Runchang Lin
 Imelda Lopez '98
 Nayeli Lopez Diaz
 Jesus A. Lozano
 Dr. Jose C. Lozano
 Sofia C. Maldonado '04, '06
 Dr. Hari D. Mandal
 Dr. Sumalai Maroonroge
 Claudia E. Martinez '04
 Dr. Gilberto Martinez, Jr.
 Pat Martinez '06
 Stephanie Y. Martinez '16, '18
 Dr. Curtis N. McReynolds
 Pablo D. Morales '02
 Brock A. Moss
 Dr. Jonathan W. Murphy
 Dr. Fatick Nath
 Dr. Brett S. Nickerson
 Dr. Paul J. Niemeyer
 Dr. Lola O. Norris '99
 Enid E. Nunez
 Pat Ornelas '04, '13
 Dr. Ricardo R. Ortegon
 Kimber J. Palmer, JD
 Andrea L. Paewelek '06, '10
 Analee G. Paz
 Cihdalli G. Perez '15
 Martha E. Perez '19

Angelo Piccirillo '85
 Rene G. Prado '02, '11
 Blanca E. Ramos '05
 Julio Reyes, Jr. '18
 Rosa M. Robledo
 Amelia V. Rodriguez
 Amy E. Rodriguez '09
 Daniela Rodriguez '05, '15
 Lorenzo Rodriguez '94
 Timothy A. Rubel
 Michelle Rubio Garcia '13, '17
 Ana L. Salazar
 Marisa Salazar '08, '18
 Yezmin D. Salazar
 Naiely M. Saldana '08, '13
 Annie P. Salinas '02
 Dr. Gilberto Salinas '99
 Marycarmen Salinas '01
 Anabelly Sanchez '09, '14
 Dr. Bernice Y. Sanchez
 Lulu Sanchez '02
 Pamela A. Short
 Dr. Arthur D. Soto-Vasquez
 Dr. Catherine C. Steele
 Merari T. Teran
 Julio C. Tovar
 Brendan Townsend *
 Eddie Trevino
 Jessica Trevino '12, '13
 Roberto Trevino '95
 Raquel Urrutia '14, '17
 Diana C. Valdez '06, '14
 Kristina Valenciano '06
 Carlos A. Vallarta
 Jessica Vasquez
 Sonia L. Vela
 Irene Vela-Mendoza
 Gloria Villagran
 Juana E. Villagran
 Linda V. Villarreal
 Maria V. Villegas '20
 Nathan J. Vogel
 Dr. Richard B. Wright
 Arek Zambanini '10
 Georgina Zamudio '09

*Denotes deceased

ALUMNI SPOTLIGHTS

Gabriel Rodríguez ('12)

Gabriel Rodríguez has been appointed Assistant Section Chief at FBI Headquarters in Washington, D.C. "With my college education and substantial experience in the military, private sector, and federal government, I was offered a position with the FBI in Virginia. In my eight years in the FBI, I have been promoted several times and have served in various leadership positions. Next year, I will celebrate my 25th wedding anniversary with my high school sweetheart and am a happy father to my three children," said Rodríguez.



Christian Benavides ('06)

Alumnus Christian Benavides is Regional Administrator for the Office of the Governor for the South Texas region. He works with the child sex trafficking prevention team and is one of five regional state administrators. His duties include monitoring grant recipients, facilitating training with law enforcement and medical professionals, overseeing 33 counties, and working with Dr. Frances Bernat, TAMIU Regents Professor of Criminal Justice via the Trafficking Emergency Network (see p. 21 for more on this).



Alberto A. Flores ('95)

Alberto A. Flores is Port Director for Laredo Port of Entry. He's a Laredo native and earned a Bachelor's degree in Criminal Justice at TAMIU.

"I look forward to working together with both long established and new partners to ensure we do as much as we can to utilize the latest technology and innovation to facilitate lawful trade and travel while keeping an ever-watchful eye on our border security mission," said Flores.



Diamond Society (\$10,000,000 +)

Sue* and Radcliffe* Killam
and Family
Maria J. and A. R. Sanchez, Jr.
and Family
Lamar Bruni Vergara Trust

Platinum Society (\$1,000,000 +)

BBVA Compass Bank
Belia R. Benavides* and Family
Canseco Foundation
E. H. Corrigan Foundation
Matias de Llano Charitable Trust
D. D. Hachar Charitable Trust Fund
Laredo Area
Community Foundation
Family of Oscar M. Laurel
Guadalupe and Lilia Martinez
Foundation
Methodist Healthcare Ministries of
South Texas Inc.
Peggy and B. P.* Newman
and Family
Georgia A.* and
Anthony J.* Pellegrino
Patricia and Renato Ramirez
Rio-South Texas Education
Community Development
Foundation
Fernando A. Salinas Charitable Trust
Elizabeth and Harry Sames, III
South Texas Academic
Rising Scholars
Julie* and Frank Staggs, Sr.
Evelyn and Carroll E. Summers, Jr.
TAMIU Faculty & Staff
Texas Community Bank
Dolly Richter Watson
Memorial Foundation

Gold Society (\$500,000 +)

Delfina and Josefina Alexander
Family Foundation
AT&T Foundation
Frances* and Blackstone Dilworth, Jr.
Doctors Hospital of Laredo
EOG Resources, Inc.
H-E-B
Laredo Medical Center
Diana and Albert Lowry
Sisters of Mercy and Mercy Health
Systems of Texas
TAMIU Alumni Association

Silver Society (\$250,000 +)

ARM University Program
Branch Alliance for
Educator Diversity
ConocoPhillips, Inc.
Family of Olga G. and
Jorge B. Haynes
International Bank of Commerce
John G. and Marie Stella Kenedy
Memorial Foundation
City of Laredo
Laredo Rotary Club
Olga H. LaVaude*
Meadows Foundation
Ana '82 and David T.* Newman
TG
Time Warner Cable
Union Pacific Foundation
Priya and Shashi Vaswani
Robert A. Welch Foundation

Bronze Society (\$100,000 +)

AEP - American Electric Power
Arguindegui Oil Company
Beaumont Foundation
Campus Consortium
Commerce Bank
Dassault Systemes
SolidWorks Corporation
Falcon International Bank
Helene Fuld Health Trust
Juanita Galvan and
Eduardo A. Garza-Robles
Elizabeth J. Gill*
Greater Texas Foundation
Adela* and Manuel Guerra
Gloria and Daniel B.* Hastings, Jr.
Lasker O'Keefe Hereford*
Housing and Residence Life
at TAMIU
Nancy Smith Hurd Foundation
Sam N. Johnson*
J. A. Kawas Charitable Trust
Dr. Ray M. Keck, III and
Patricia Keck
Cristina and Radcliffe Killam, II
Dr. W. F. King* and
Dr. Edmund L. King*
Laredo Daybreak Rotary Club
Laredo Medical Center Gift Shop
Laredo Specialty Hospital
Dr. Francisco A. Leal and
Nora M. Leal
Logistics and Manufacturing
Association Port Laredo
Los Caballeros De La Republica Del
Rio Grande Inc.

Mall Del Norte
Sandra and Brian O'Brien
Hortense Offerle*
Martha C. Pradeau Charitable
Remainder Trust
Ed Rachal Foundation
Richer Family
Sandia National Labs
Francisco M. Staggs, Jr.
Raul C. Staggs
Wells Fargo Bank, N.A.
Women's City Club
Audrey and Carlos M. Zaffrini, Jr.

Pewter Society (\$50,000 +)

Anonymous
Dr. Pablo Arenaz and Norma Arenaz
Family of Anita G. Benavides
Arturo N. Benavides, Jr.
Family of Honorable
C. Y. Benavides, Jr.
Norma Zuniga Benavides*
Josephine Brand*
Mary Kathryn and
Rosendo A. Carranco and Family
Chemtura Company
Coca-Cola Foundation
Consulado General de Mexico en
Laredo
Doctors Hospital Auxiliary
The Honorable Elma Salinas
and David Ender
Doris* and Isaac Epstein
Excelencia in Education
Farm Credit Bank of Texas
Ford Motor Company
Yolanda* and Albert E.* Friedman
The Honorable Anna Galo and
The Honorable John Galo
Emilia Rodriguez Garcia *
Alfonso Gomez-Rejon
Raymond Martin Gutierrez and
Melba P Gutierrez Trust
Estate of Rudolph Hafernik
Minnie Dora Bunn '77 and
Juvenal J. Haynes '77
Norma A. Hunt
Lakeside Subdivision LLC
Laredo Asian Association
Laredo Builders Association, Inc.
Laredo Economic
Development Corporation
Laredo Morning Times
Laredo-Webb County
Bar Association
Louis P. LaVaude
Leyendecker Construction, Inc.
William Neel Mayo
Mejia Engineering Company

Pilar Maria Munoa
Family of Josette K. and Joe Palacios
Rosanne Palacios
Janet M. Payne
Pam and George Person
Prairie Foundation
Mary and Evan J. Quiros
Minnie Ramirez and Family
Etta T. Russell*
Servicios Industriales Penoles
S. A. de C. V.
South Texas Higher
Education Foundation
Stripes Foundation
TexProtects Champions for Safe Children
Family of J. O. Walker, Sr.
Wyatt Foundation
Angela* and Renato* Zapata, Sr.
and Family
Javier A. Zapata *

Copper Society (\$25,000 +)

Dr. Esteban Alejo* and Laura Alejo
Order of the Alhambra
64 Zahara Caravan
American Petroleum Institute-Border
Chapter
Aramark Corporation
Sonia '87 and Guillermo Benavides Z., Jr.
The Honorable Bob Bullock* and
Jan Felts Bullock
Capital Farm Credit, FLCA
Juan J. Castillo and Raul Guerra
CONAHEC
The Honorable Henry Cuellar, Ph.D. '82
Family of Luz Maria Davila '76, '79
Educational Foundation of America
Family Chevrolet
Diane and Tom Gates
Samantha and Dos Gates
Guadalupe Haynes
Candy and Conrado M. Hein, Jr. '78
Hurd Enterprises LTD
International Good Neighbor Council-
Laredo Chapter
Dr. Gladys C. Keene and
Dr. Roger Keene
Khaledi Family
Kinder Morgan Foundation
La Posada Hotel
Laredo Chamber of Commerce
Laredo Daybreak Rotary
Charitable Foundation, Inc.
Laredo Licensed US Customs Brokers
Association, Inc.
Laredo Rehabilitation Hospital LLC
Laredo Sports Medicine Clinic
Jaime Loera
Roslyn* and Max* Mandel

Suzy N. Mayo*
Mendoza Maintenance Group, Inc.
Hilda '91 and Salvador Mercado
Mercy Health Plans
Elsa and Rudy Miles
Palenque Group
Pan American Express, Inc.
Dr. Jana Pisani and
Dr. Michael Pisani
Lupita Ramirez and the VSAL
Genealogical Society
Raj K. and Raj P. Seekri
Jo Emma P. and
Edward L. Sherfey, Jr.
Sony USA Foundation
State Farm Mutual Automobile
Insurance Company
Summerlee Foundation
The Honorable Aldo Tatangelo*
and Alice Tatangelo*
Texas A&M Foundation
Texas Guaranteed Student Loan
Corporation
Dr. Jerry D. Thompson
Trellis Company
VOS-MITA
Rob and Bessie Welder
Wildlife Foundation
Winn Exploration, Co.
Josephine* and Fernando* Zuniga,
Jr. and Family

*Denotes deceased

A LEGACY OF YOUR OWN?

Interested in
forging a legacy
of your own
at Texas A&M
International
University?

Call Rosanne Palacios at
956.326.2178, email
rosanne.palacios@tamiu.edu
or mail donations to
TAMIU
Office of Institutional
Advancement
5201 University Boulevard,
Laredo, TX 78041

TRIBUTES

In Memory of

Robert Batey
Virjilio Enrique Blasco
Charlie Borchers
Bonnie Lee Burkhalter-Villarreal
Vishal Buxani
Maria Carmen Castro
Raquel Cisneros
Clif W. Coonrod
Michael G. Daniel
Michael F. Doyle
Geena O. Fallis
Baldo G. Garcia, Jr.
Dr. Julio C. Gomez-Rejon

Dr. William C. Gruben, III
Robert Hernandez, Jr.
Elias Herrera
Edgar Jara
Joyce Keck
Olga H. LaVaude
Elmo Lopez, Sr.
Sherry Montes
Norma Moore
Josette K. Palacios
Jim Parish
Deacon Daniel S. Pena
Sylvia O. Portlock

Edmundo O. Ramirez
Julie Leeanne Reese
Adalberto L. Reyna
Dr. Frances Gates Rhodes
Dr. Siddharth Shankar
Charlotte Sharp
Shantal Shehab '01
Brendan Townsend
Dolores Arce VanHorn
Bonnie Lee Burkhalter Villarreal
Lejeune Whitworth
Rosa Zuniga

In Honor of

Randy Aguilar '22
Sanaa Z. Al-Nasser '21
Silvia Blanco Guitian
Class of 2023
Breanna DeLon '22
McKenna Flagler '24
Aleksi Garner Perez '19
Nancy V. Garza '21

Allen Hof
Alexandra C. Howland '18
Cliffé Killam
Lorena Martin Perez
Dr. Linda Marie Mitchell '77, '82
and Dr. Thomas Regan Mitchell
Dr. Thomas Regan Mitchell
Rosanne Palacios and Rick Pauza

RTG 2014-2015 Ambassador
Daniela Sandoval '24
Jesse Shaw
Dr. Jerry D. Thompson, TAMIU
Regents and Piper Professor
Arianna Villarreal '08, '21
Allison Wade '22
Kayla Zambanini

WALK OF FAME

TAMIU's Walk of Fame is located on the south end of the native stone water fountain that graces the plaza in the center of campus. Purchase of the inscribed bricks is great way for students, organizations, parents, alumni, and community supporters to be part of a permanent tribute that supports TAMIU.

Sanaa Z. AL-Nasser '21
Sonia Alvarado '87
Jenna D. Arsuaga '21
Murali K. Bandaru '16
Maurice L. Bell '16, '20
Adriana Y. Benavides '20
Dr. Adriana Blasco-Rubio '00
Maggie Blasco '01
Maria G. Blasco Tinajero '03
Virjilio Enrique Blasco*
Vanessa Byrd '05, '18
Gilberto Celedon Saldana '21
Salma G. De Alba '21
Alma Gonzalez De La Cruz '23
Alexander F. De La Parra '21
Emanuel and Elizabeth M. Diaz '11
Marvin Dominguez '20
Aydee M. Esparza '21
Amaranta Espinosa '21
Arizbeth Espinoza '22
Mohan K. Gangarapu '16
Baldo G. Garcia, Jr. '84

Samantha Gonzalez '17
Madison Renee Guerra '21
Rosalia Guerra '06
Jesenia Hernandez '21
Roberto Placido Hernandez '05
Ricardo Ibarra '21
Maria C. Jacobo '20
Hiba Kerdy '07
Peter E. Laurel Jr. '01
Enrique T. Lozano '98
Jessica Y. Lozano '16
Rosie Maldonado '23
Alyssa L. Martinez
Jaime D. Martinez '96
Fernando Morales '06
Rebekah A. Morales '21
Dr. Daniel J. Mott
Lisa Marie Navarro '17
Armandina Ortegón '18
Alessandra Pereda '21
Sylvia O. Portlock
David Israel Ramon '21

Patricia Reyes '96
Adalberto L. Reyna*
Dr. Frances Gates Rhodes* '78, '79
Ricco Rizo '21
Alyssa Mimi Robles '17, '20
Andrew Riojas '21
Maria I. Ruiz '18
Dr. Gustavo Salazar II '99
Krisela Salinas '20
Pedro A. Segovia '21
Shufen Jan Sokhom '92
Dr. Jerry D. Thompson
Alejandro Tamez '21
Ma. Carmen Torres '92
Eduardo Valverde '93
Dolores Arce VanHorn*
Sylvia Elia Vargas '93, '96, '01, '13
Kacie N. Vasquez '20
Ezequiel Vega '12, '21
Pamela Wallace '21
Dr. Carol Waters*

TAMIU STUDENTS ARE PART OF THE UNIVERSITY'S PHILANTHROPIC TRADITION AND EACH CLASS CONTRIBUTES TO THE DUSTDEVIL P.R.I.D.E. SCHOLARSHIP

Class of 2020

Tiffany C. Alexander
Andrew E. Alfaro
Alice Almanza
Adriana G. Alvarez
Gladys V. Benavides
Susan A. Cadena
Frida M. Camero
Stephanie A. Castro
Bianca C. Cazares
Gabriela Chapa
Mayra A. Cortes
Cordelia Dominguez
Bryana G. Duck
Odalys Espinoza
Francisco J. Flores
Perla Y. Fuentes
Georgina Galaviz
Genesis C. Garcia-Escobedo
Ashley M. Gibeaut
Alan A. Gonzalez

Cristina V. Guevara
Jessica M. Gutierrez
Manelick Hernandez
Jesus A. Huerta
Nadia A. Jimenez
Cristina I. Lara
Francisco J. Lara
Griselda Laurel
Valeria L. Leal
Lluvia J. Linan
Crystal L. Martinez
Eva J. Martinez
Fernando E. Martinez
Gonzalez
Lizeth A. Martinez
Savannah K. Martinez
Jose A. Medrano
Javier Mendez
Joselynn Mendez
Klarissa I. Mendez
Marianna Molina

Elizabeth Morillo
Daisy M. Olivares
Annette M. Palacios
Griselda L. Palacios
Jasmin A. Palacios
Roland J. Patricio
Clarissa A. Perez
Jose A. Perez, Jr.
Samantha A. Perez
Claudia G. Ramirez
Jacqueline Ramirez
Mitzi A. Ramirez
Angelica S. J. Ramos
Daphne D. Ramos
Michelle D. Ramos
Jennifer L. Rangel
Jennifer Rivera
Angelica R. Rodriguez
Juan C. Ruiz
Cassandra Saldivar
Krisela I. Salinas
Luis Sanchez

Larissa N. Solis
Yaritza L. Tejada
Paola V. Tovar Loya
Rocio E. Trujillo
Edyth J. Vela
Daniela Veloz
Daniela Vergara
Lorraine E. Villarreal
Maria V. Villegas

Class of 2021

Jesus E. Abrego
Alejandra Aguilar
Dante M. Aguilar
Sanaa Z. M. Al Nasser
Abdiana Alfaro
Oscar E. Almanza, Jr.
Arianna Alvarado
Olga V. Alvarado
Rebecca N. Alvarado
Dalila Alvarez
Melissa M. Amesquita
Sharon E. Amoros
Yovanka O. Araiza
Pablo Arenaz
Berenice J. Armendariz
Arturo Arriaga, Jr.
Jenna D. Arsuaga
Binod Aryal
Sofia I. Arzagoitia
Mario A. Avalos, Jr.
Fabiola Balderas
Alfredo Barrera, III
Christina N. Barrera
Keyiris Bautista
Karina I. Benavides
Kayla M. Benavides
Valerie Benavides
Krysta A. Bentiez
Daniela Bermudez
Miguel E. Bernal
Esmeralda S. Blaquez
Edna G. Bouchot
Analay Bustamante
Jacqueline A. Caballero
Joel A. Caballero
Joseph A. Caballero
Briana Cabrales
Angelica Cadena
Mariana Cadena
Rosa I. Cadena
Keisha A. Calderon
Rebecca L. Calderon
Leslie Campos
Leticia A. Canales
Marianna E. Canales
Rebecca E. Cantu
Yessica Cantu
Martin Caracheo
Aracely Cardenas
Brandy D. Cardenas
Brenda E. Carmona
Alexandro Carraman
Katherine Carrera
Justin C. Carrillo
Alexander Castillo
Cecilia Castillo

Jocelynn Castillo
Vanessa L. Castillo
Daniel G. Castillon, III
Verania Y. Cavazos
Jordan A. Cervantes
Michael A. Cervantes
Tomas Chapa
Jose L. Chong
Lexy Cirlos
Olivia L. Cisneros
Alix L. Coria
Briana M. Cruz
Clemente Cruz, Jr.
Alexander G. Davidson
Luis H. De La Cruz, Jr.
Alexander F. De La Parra
Jammy J. Del Bosque
Elia M. Diaz
Gabriela Diaz
Daniella A. Dominguez
Julio C. Dominguez
Alexandra Elizondo
Emily Escamilla
Aydee M. Esparza
Amaranta L. Espinosa
Maria I. Espinoza
Jose A. Esqueda
Dalia D. Esquivel
Natalia L. Estrada
Anthony Y. Fernandez Alos
Gabriela M. Flores
Karma R. Flores
Tamara L. Flores
Abigail Garcia
Alondra Garcia
Anaestella Garcia Buentello
Deidre D. Garcia
Eduardo I. Garcia
Cecilia P. Garcia Guerrero
Jessica Garcia
Joana M. Garcia
Julissa L. Garcia
Norma A. Garcia
Paola K. Garcia
Rodrigo Garcia
Samantha Garcia
Jennifer Garcia Tellez
Victoria M. Garcia
Alejandra L. Garza
Destiny R. Garza
Itzel Garza
Karina Garza
Zelma A. Garza
Angelica R. Godinez
Arturo J. Gomez
Evelyn G. Gomez Bunn
Carmen Z. Gomez
Dezteny A. Gomez
Fabiola A. Gomez
Israel S. Gomez, Jr.
Kelly Gonzales
Alexis A. Gonzalez
Berenice Gonzalez
Claudia M. Gonzalez
Elizabeth Gonzalez
Justin R. Gonzalez
Karina L. Gonzalez

ALUMNI SPOTLIGHTS

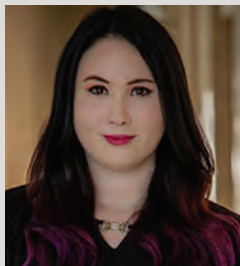
Maximiliano Zapata ('17)

With help from Webb County Judge Tano Tijerina ('02) and Red Wing United, Maximiliano Zapata orchestrated various efforts to help residents of El Cenizo receive imperative resources during the 2021 Texas Winter Storm. As the former city commissioner and current El Cenizo resident, Zapata assisted in mobilizing people to deliver essential items, blankets, pizza, and water to those without water or electricity. He earned a TAMIU B.A. in Political Science.



Ashley Morales ('14)

We always say TAMIU alums really go places, but graduate Ashley Morales has gone from a TAMIU Study Abroad program to making the world her workplace. She's lived, studied and worked in the UK and says she's a digital nomad --working wherever her laptop and WiFi connection co-exist. "I particularly enjoy working remotely since the importance of my day is centered on the necessary work I am doing. I have also been able to travel while working and have truly come to appreciate this modern work-life balance," she said.



Marian M. Gonzalez
 Mario A. Gonzalez, Jr.
 Briselda Gonzalez Munoz
 Ramiro A. Gonzalez
 Travis A. Gonzalez
 Jacob A. Guerra
 Madison R. Guerra
 Desiree Guerrero
 Rolando N. Guerrero
 Adriana R. Hernandez
 Christopher Hernandez
 Esmeralda L. Hernandez
 Janelly Hernandez
 Lucia D. M. Hernandez
 Luis F. Hernandez
 Madeline Hernandez
 Ana V. Hinojosa
 Byannca L. Hinojosa
 Andrew Holsey
 Claudia S. Hourigan
 Pablo E. Huerta
 Mayra V. Hurtado
 Andrea Iglesias
 Derly N. Inclan
 Olga L. Jaime Montoya
 Tania G. Jauregui
 Damaris Jimenez
 Sean E. Kemp
 Estefania Lamoglia Torres
 Yvette M. Lancette
 Amber N. Linn
 Denise Longoria
 Mary L. Longoria
 Andres A. Lopez
 Sandra P. Lopez
 Tatiana Lopez
 Crista B. Lozano
 Magaly A. Lozano
 Sandra E. Lozano
 Iridian Lucas
 Gabriela M. Luevano
 Stephany D. Lugo
 Itzel M. Luna
 Jose A. Maldonado
 Andres Marcos
 Adriana Mares
 Leslie L. Mares
 Lynn E. Marroquin
 Alexia V. Martinez
 Ariani Martinez
 Eduardo R. Martinez, III
 Ivan M. Martinez
 Krista L. Martinez
 Kristina J. Martinez
 Lesly A. Martinez
 Lori A. Martinez
 Mary A. Martinez
 Joaquin Mata, Jr.
 Perla A. Mata
 Alma Medina
 Jessica K. Medina
 Miguel A. Medina
 Jaaziel Menchaca
 Jazmine Mendez
 Karla A. Mendez
 Edna M. Mendoza
 Eduardo Mendoza, Jr.
 Jaquelyn Mendoza
 Monica L. Mendoza
 Jose O. Moyo, Jr.
 Kristine M. Meza
 Ruby M. Meza
 Megan J. Mikulik
 Jose A. Montelongo, Jr.
 Angelica Montiel
 Roxana Montiel

Beatrice E. Morales
 Karen A. Morales
 Rebekah A. Morales
 Angela J. Moreno Garcia
 Crystal M. Murillo
 Karla A. Navarro
 Sara A. Navarro
 Victoria M. Navarro
 Jacqueline Nieto
 Corissa J. Nino
 Priscilla Nino
 Carlos A. Olivares, Jr.
 Adriana Olivares
 Melanie Olvera
 Vikki A. Ortegón
 Daniela M. Ortiz
 Jesmel D. Ortiz
 Lizbeth A. Ortiz
 Rogelio Ortiz, Jr.
 Sabrina Pacheco
 Cecilia Paez
 Sandra L. Palacios
 Demi R. Payle
 Alexis L. Pena
 Jose L. Pena, Jr.
 Alessandra Pereda
 Arianna V. Perez
 Gisela G. Perez
 Justo Perez
 Leanna M. Perez
 San Juana S. Perez
 Angela D. Peterson
 Lori Y. Pinedo
 Alyssa M. Pinon
 Stephanie Plascencia
 Kiana K. Pompa
 Benita Y. Preciado
 Daniel Quiroga
 Adrianna N. Ramirez
 Andrea J. Ramirez
 Angela D. Ramirez
 Ariana G. Ramirez
 Vanessa L. Ramirez
 David I. Ramon, II
 Michelle A. Ramos
 Jorge Rangel
 Pablo Rangel
 Justin A. Reagan
 Brandy M. Rendon
 Jorge A. Rendon
 Maria S. Reyes
 Isis E. Rivera
 Samantha N. Rivera
 Victor M. Rivera
 Emely M. Rizzi
 Alyla A. Robles
 Nancy D. Rocha
 Adolfo Rodriguez
 Amanda L. Rodriguez
 Aracely M. Rodriguez
 Cecilia Rodriguez
 Gerardo Rodriguez
 Jennifer S. Rodriguez
 Jessica N. Rodriguez
 Jose Rodriguez
 Jose T. Rodriguez
 Kristina R. Rodriguez
 Larissa D. Rodriguez
 Maria G. Rodriguez
 Maria M. Rodriguez
 Mariana Rodriguez
 Michelle Rodriguez
 Veronica A. Rodriguez
 Daniela Rubio
 Erika Ruiz
 Viviana Saenz

Estefania Salazar
 Jesus S. Salazar
 Cinthia I. Salinas
 Lesly Samano
 Adriana C. Sanchez
 Nancy J. Sanchez
 Osmar Sanchez
 Paulette M. Sanchez
 Carissa E. Sanchez-Brito
 Leslie R. Sandoval
 Nataly N. Sandoval
 Edelmiro A. Santos
 Evette Santos
 Olinda Santos
 Stephanie D. Sarabia
 Carla J. Saucedo De Garza
 Pedro A. Segovia
 Bryanna Sendejo
 Federico H. Serna
 Ashley A. Soliz
 Diana S. Soliz
 Claudette D. Soto
 Carolina V. Tamez
 Brianna N. Tijerina
 Denisse Tijerina
 Hector D. Tijerina
 Loretta C. Tobias
 Itza A. Toledo
 Genesis A. Torres
 Rocio Torres
 Ana A. Trevino
 Ana L. Trevino
 Deborah L. Trevino
 Ithzamara K. Tuexi
 Jacqueline A. Ugarte
 Guadalupe Valdepena
 Raymundo H. Valdez
 Diana L. Vargas
 Amando Vasquez
 Humberto Vazquez, Jr.
 Jonathan Vega
 Vanessa Vela
 Karla V. Velarde
 Klarissa I. Villa
 Jocelyn Villarreal
 Joseph R. Villarreal
 Julissa Villarreal
 Stephanie Villarreal
 Veronica R. Villarreal
 Marysol Villegas
 Pamela M. Wallace
 Adrian D. Walsh
 Latanya I. Wise
 Alexis J. Wu
 Nadia Y. Zamago
 Abigail Zuniga
 Isabel Zuniga

Class of 2022

Emily A. Munoa
 Alfredo Tello
 Astrid J. Veliz

Class of 2023

Anaiz D. Martinez
 Karen L. Martinez
 Lorena Santillana
 Geezel A. Tovar
 Ashly A. Villarreal

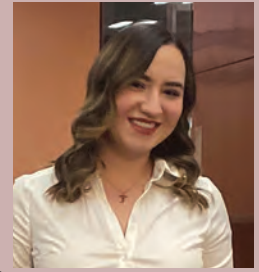
Class of 2024

Antualh Rios
 Jessica N. Rivera
 Juan E. Rocha
 Luis A. Rosalez

ALUMNI SPOTLIGHTS

Tabata Rodríguez ('19)

Tabata is Management Assistant for the U.S. Embassy in Mexico City. She works for the International Narcotics and Law Enforcement Section of the U.S. Department of State. The Section works through the Merida Initiative, which supports Mexico's efforts to strengthen its law enforcement institutions, enhance criminal prosecutions and the rule of law, build public confidence in the justice sector, improve border security, promote greater respect for human rights, and prevent crime and violence. "I found out that one of the things I enjoyed the most while I was at TAMIU was sharing parts of my Mexican roots with the Laredo community, so I want to keep doing this on a professional level," said Rodríguez.



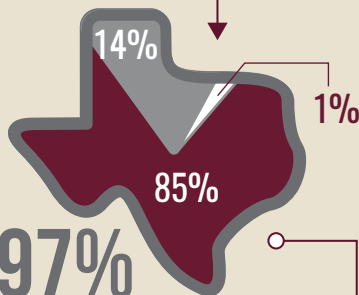
Sandra Medina Fallgatter ('92)

She's a Sr. Director for U.S. Import Trade Compliance at Walmart, Inc., and reports to the US Ethics and Compliance Organization, providing overall direction and developing, communicating, building support for, and implementing business strategies for Walmart's direct import compliance program. She's been the recipient of the World Customs Organization Certificate of Merit and the Footwear Distributors and Retailers of America has named her a Trade Advocate of the Year. And yet, she still finds time to reach out to students and share her insight. She recently participated in a Virtual Coffeehouse networking opportunity with TAMIU students through the Office of Career Services.



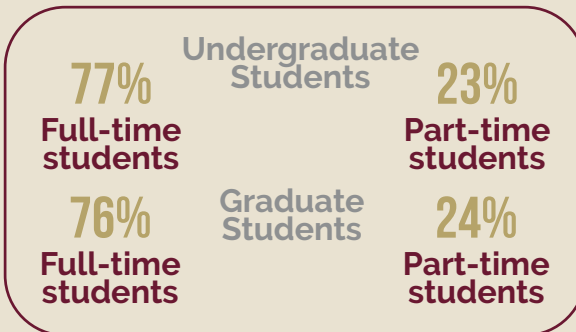
By the NUMBERS

8,525 Students
Enrolled
This Fall



**Students are
from Texas**

Undergraduate
Enrollment Residency:
77% Laredo
20% Other Texas cities
3% Non-Texas



35 Countries
Represented In
student population



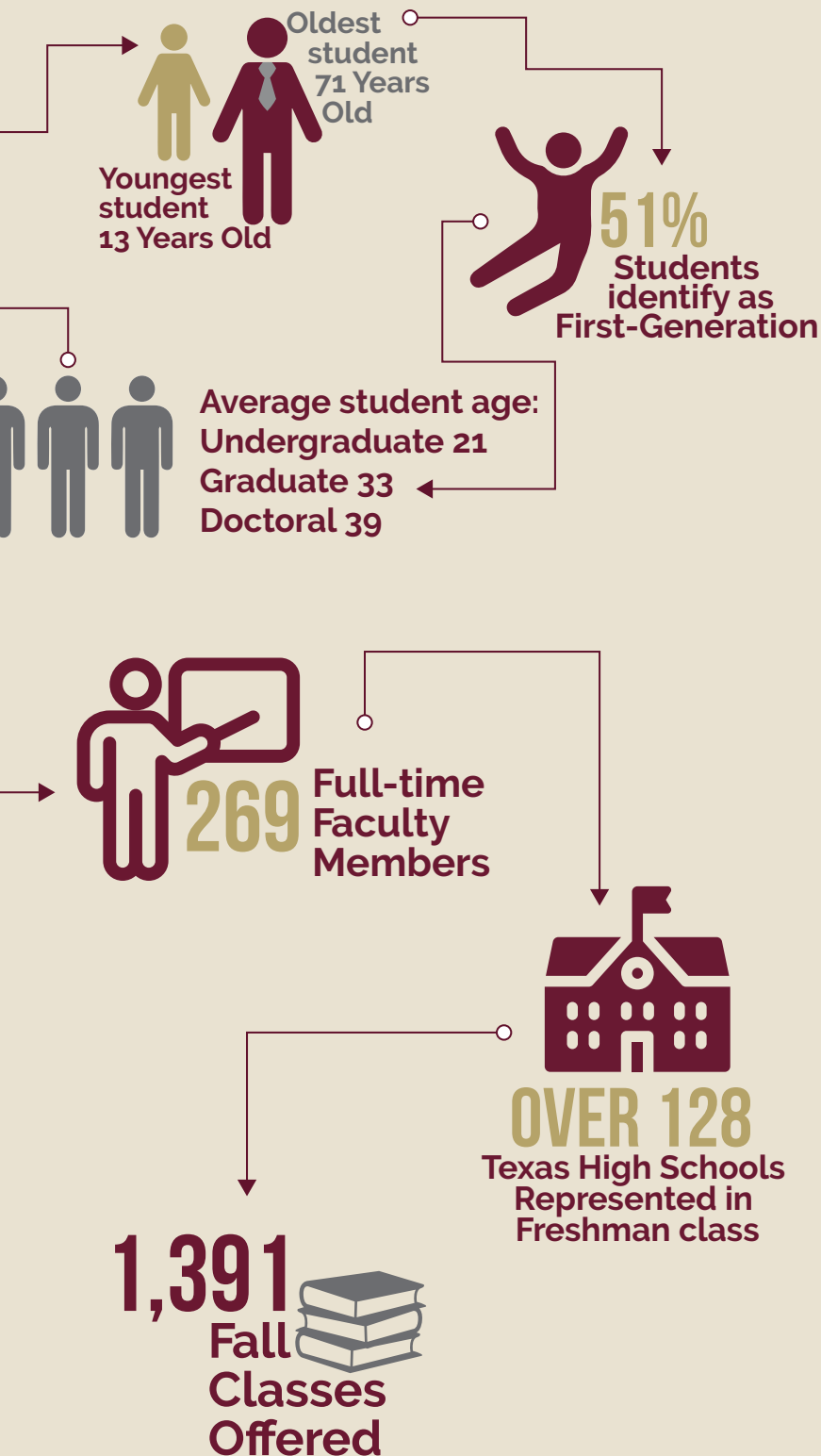
\$75,127,045
Money Awarded
in Financial Aid

TOP 3 Graduate majors:

- Business Administration
- Curriculum & Instruction
- Criminal Justice

TOP 3 Undergraduate majors:

- Nursing
- Business Administration
- Criminal Justice



BRAGGING RIGHTS

Least Expensive University in Texas
Student Loan Hero,
A Lending Tree Co.
2021



Student
Loan Hero

by **lendingtree**

Highest-Ranked A&M System Campus
Among Best Regional Universities West
U.S. News and World Report
2022

Ranked No. 4 Among Southern Colleges
for 'Best Bang for the Buck'
Washington Monthly Magazine
2021



Ranked 8th Among Top Public
Universities in Texas
Niche
2022

One of Best in Nation for Online Healthcare
Learning
EduMed.org
2021

Ranked 6th Among U.S.'s Best Affordable Nursing
College Programs
University HQ
2021



Top Performer
on Social Mobility
U.S. News and World Report
2020

Ranked 5th in US for Affordability, Highest Return
on Investment
Great Value Colleges
2020



7 Degree Programs Earn Top
Ranking
Intelligent.com
2021



TEXAS A&M **INTERNATIONAL** UNIVERSITY

OFFICE OF THE PRESIDENT

5201 UNIVERSITY BOULEVARD,

LAREDO TX 78041-1900

TEXAS A&M INTERNATIONAL UNIVERSITY